



## 602 The Entrance Road BATEAU BAY NSW

6 4 2

This is a rare opportunity to acquire two modern homes on one very large resort-style block complete with a freestanding home, two-bedroom granny flat, pool and pool house. Create your own private oasis and have room for extended family or additional income. Boasting stunning contemporary features and quality finishes throughout with enough space for everyone. Situated on the East side of Bateau Bay, close to shopping centres, excellent schools and a host of stunning central coast beaches.

- Light and bright with freshly updated interiors and timber floors
- Large family living flows via stacker doors to full-width verandah
- Casual living/dining area adjoins the kitchen and flows to

[For full version visit the website](https://www.whitemanproperty.com.au)

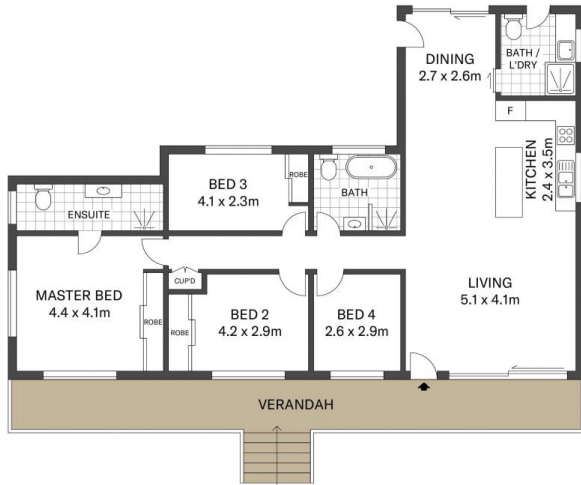
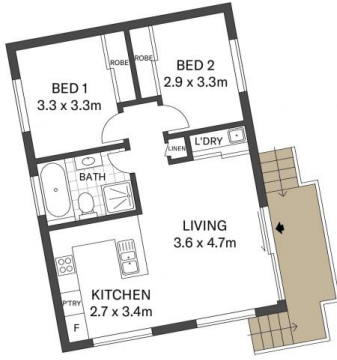
**Type** : House  
**Price** : \$ 1,560,000  
**Land Size** : 952 sqm  
**View** : <https://www.whitemanproperty.com.au/sale/nsw/central-coast-region/bateau-bay/residential/house/7040771>



**Brian Whiteman**  
02 4384 1349



**Josh Froud**  
0414 322 888




SITE PLAN

APPROX. INT: 126m<sup>2</sup>  
 APPROX. OUT-BUILDING: 76m<sup>2</sup>  
 LAND: 952m<sup>2</sup>



THE INFORMATION CONTAINED IN THIS DOCUMENT HAS BEEN PROVIDED BY THIRD PARTIES. THE AGENCY HAS NOT CHECKED THE INFORMATION AND MERELY PASSES IT ON, NOT HAVING A BELIEF ONE WAY OR THE OTHER AS TO ITS ACCURACY. INTERESTED PARTIES SHOULD MAKE AND RELY UPON THEIR OWN ENQUIRIES.

 602 The Entrance Road, Bateau Bay

THE  AGENCY