

WHITEMAN PROPERTY



8 George Evans Road Killarney Vale NSW

3 1 2

Neat and tidy three-bedroom home centrally located in the heart of Killarney Vale. Offering fresh interiors in cool coastal tones and open plan living, dining and kitchen that flows to outdoor entertaining. Situated in a family-friendly location, a stone's throw from Brooke Avenue Public School and Eastern Road Oval. Close to Bateau Bay Square and Killarney Vale Shops and Cafes. Short drive to Tuggerah Lake, Shelly Beach golf and surf club, Bateau Bay and The Entrance.

- Three light-filled bedrooms with built-in robes
- Open plan kitchen, living and dining area
- Covered rear patio for alfresco entertaining
- Full family bathroom with separate bath and shower
- Internal laundry with 2nd toilet

[For full version visit the website](https://www.whitemanproperty.com.au)

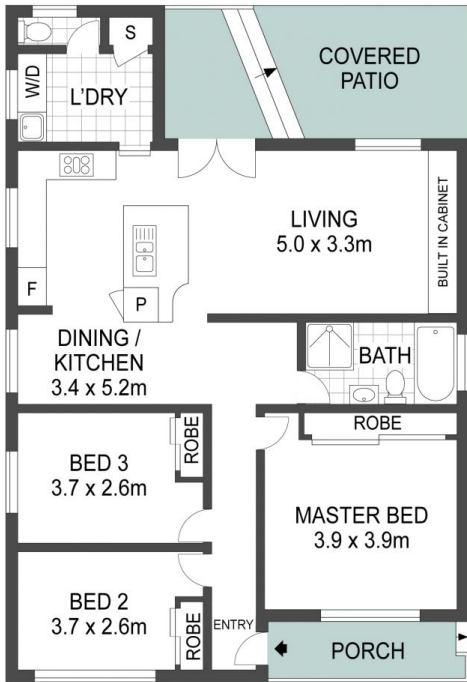
Type : House
Land Size : 556 sqm
View : <https://www.whitemanproperty.com.au/lease/nsw/central-coast-region/killarney-vale/residential/house/7076782>



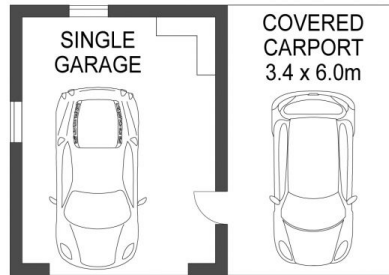
Scott Falzon
02 4384 1349



Laetitia Jones
0439 481 303



FLOOR PLAN



(NOT IN POSITION)



SITE PLAN

APPROX. INT: 99m²
 APPROX. LAND: 569m²



THE INFORMATION CONTAINED IN THIS DOCUMENT HAS BEEN PROVIDED BY THIRD PARTIES. THE AGENCY HAS NOT CHECKED THE INFORMATION AND MERELY PASSES IT ON, NOT HAVING A BELIEF ONE WAY OR THE OTHER AS TO ITS ACCURACY. INTERESTED PARTIES SHOULD MAKE AND RELY UPON THEIR OWN ENQUIRIES.



8 George Evans Road, Killarney Vale

WHITEMAN
property