

# WHITEMAN PROPERTY



**5/16 Anzac Road LONG JETTY NSW**

**3**  **2**  **2** 

Designed with a focus on elegance and quality, these brand new contemporary townhomes provide luxury and convenience in a superb location surrounded by a choice of lifestyle pursuits including coastal walks, lake activities and minutes to stunning beaches, shops and cafes. Perfect for those seeking a relaxed Coastal lifestyle in a quiet, yet convenient location.

- Sundrenched open plan living areas flow to alfresco entertaining
- Luxurious open plan kitchen with stone bench breakfast bar; gas cooktop
- Quality finishes; tiled flooring; quality carpets; downlights; ducted air-conditioning
- Opulent master bedroom with ensuite; walk-in robe

**Type** : Townhouse

**View** : <https://www.whitemanproperty.com.au/sale/nsw/central-coast-region/long-jetty/residential/townhouse/7084188>



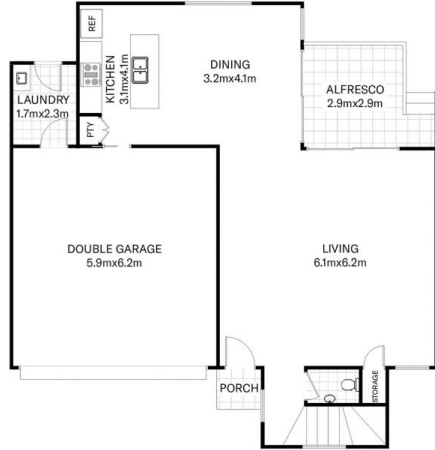
**Brian Whiteman**  
**02 4384 1349**

[For full version visit the website](https://www.whitemanproperty.com.au)

<https://www.whitemanproperty.com.au>



FIRST FLOOR



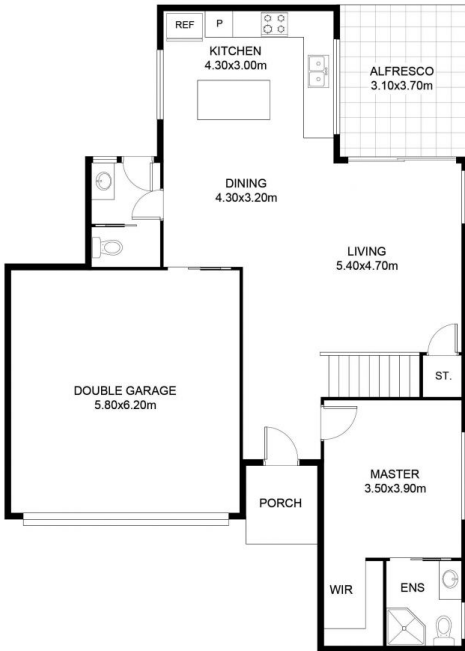
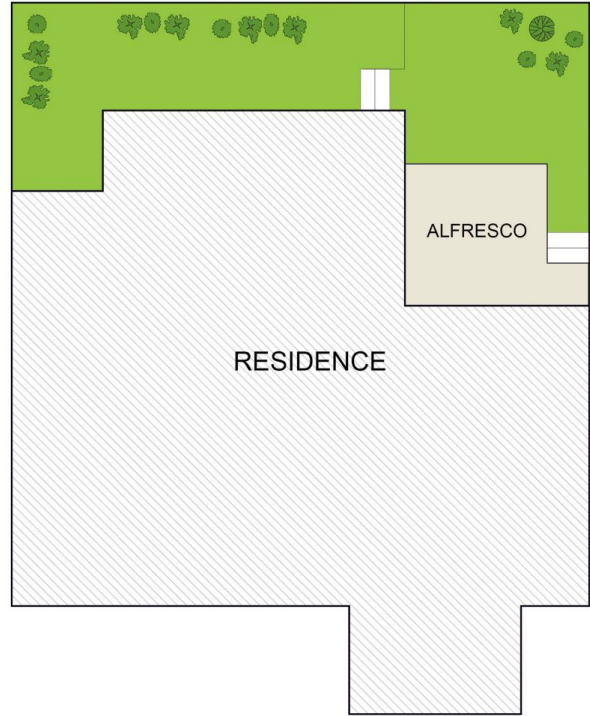
GROUND FLOOR

INTERNAL FLOOR AREA 190 m<sup>2</sup>

Indicative only. All dimensions and element positions are approximate. Information on this plan comes from sources we believe to be accurate, but its accuracy is not guaranteed. Interested parties should make and rely on their own inquiries

 4/16 Anzac Road Long Jetty

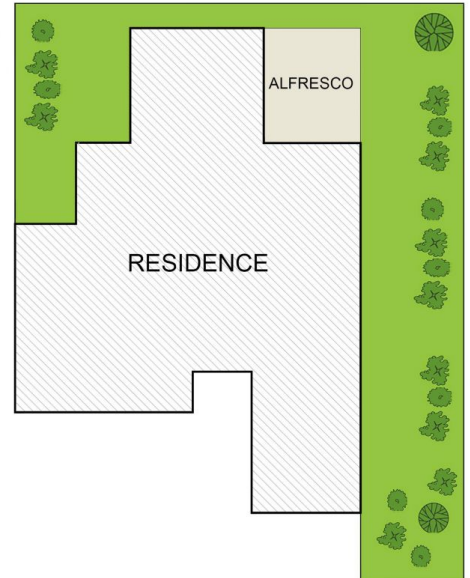
THE  AGENCY



GROUND FLOOR



FIRST FLOOR



INTERNAL FLOOR AREA 184 m<sup>2</sup>

Indicative only. All dimensions and element positions are approximate. Information on this plan comes from sources we believe to be accurate, but its accuracy is not guaranteed. Interested parties should make and rely on their own inquiries

 5/16 Anzac Road Long Jetty

THE  AGENCY