



35 Tasman Avenue Killarney Vale NSW

4 2 1

This impeccable single level family home has been stylishly renovated throughout with light-filled living areas with abundant space for the growing family.

Peacefully located with a fully fenced yard, perfect for children to play. Within minutes of schools and local shopping centres and a short drive to Shelly Beach Golf and Surf Club, Tuggerah Lake and The Entrance.

- Picturesque street appeal surrounded by easy care gardens
- Multiple living areas plus alfresco entertaining, perfect for family gatherings
- Brand new kitchen with breakfast bar; adjoins the laundry and casual living

[For full version visit the website](#)

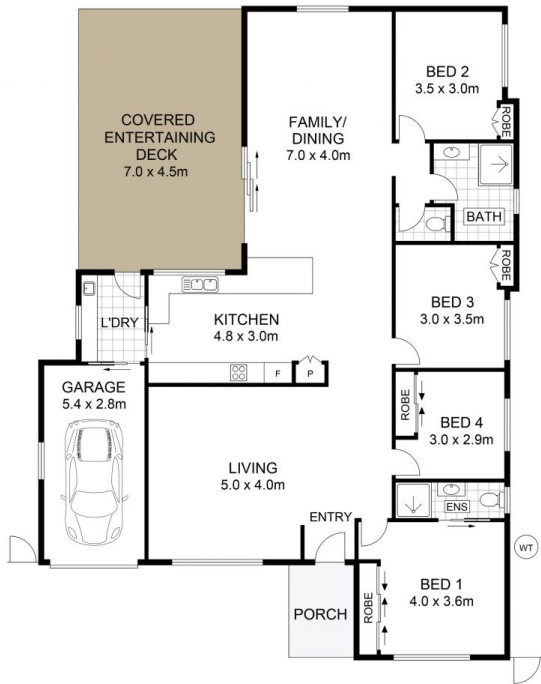
Type : House
Building Size : 130 sqm
Land Size : 556 sqm
View : <https://www.whitemanproperty.com.au/lease/nsw/central-coast-region/killarney-vale/residential/house/7085118>



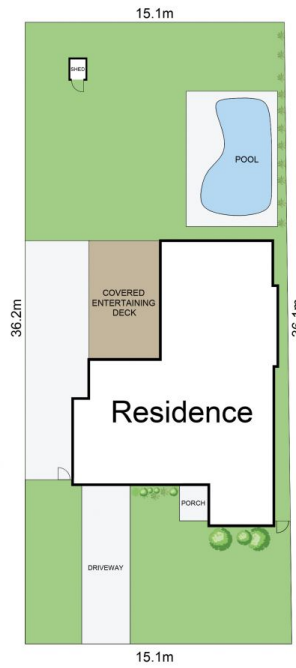
Laetitia Jones
0439 481 303



Scott Falzon
02 4384 1349



FLOOR PLAN



SITE PLAN

LAND: 556SQM
 INT: 157m²
 EXT: 37m²



THE INFORMATION CONTAINED IN THIS DOCUMENT HAS BEEN PROVIDED BY THIRD PARTIES. THE AGENCY HAS NOT CHECKED THE INFORMATION AND MERELY PASSES IT ON, NOT HAVING A BELIEF ONE WAY OR THE OTHER AS TO ITS ACCURACY. INTERESTED PARTIES SHOULD MAKE AND RELY UPON THEIR OWN ENQUIRIES.



35 Tasman Avenue, Killarney Vale

WHITEMAN
 PROPERTY