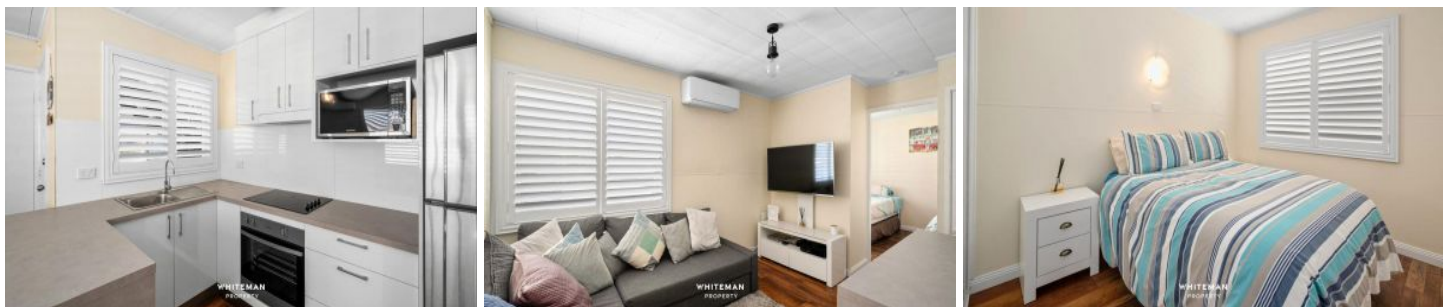


# WHITEMAN PROPERTY



## 5/22 Binburra Avenue Toowoon Bay NSW

2 1 1

Well appointed 2 bedroom apartment located a short distance to the sands of Toowoon Bay Beach. This property features 2 bedrooms, lounge room, modern kitchen, external laundry and a single car space. The property is located at the end of Binburra Ave and has access to Toowoon Bay Beach at the end of the street making this property the ideal location for those looking for a lifestyle property.

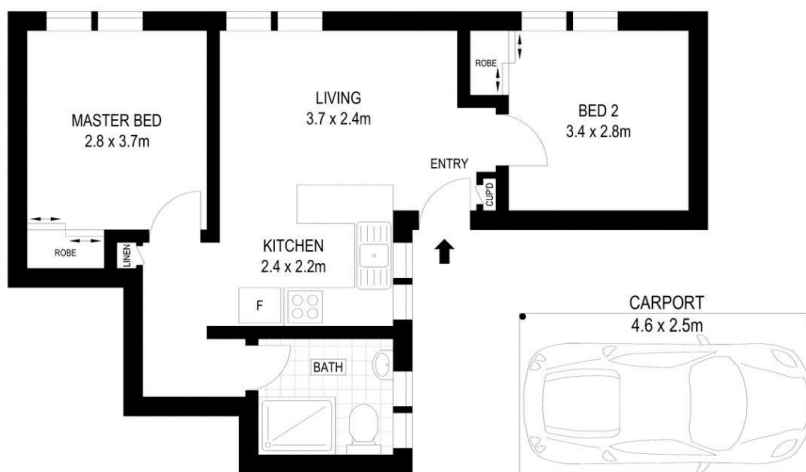
Current tenant vacates on the 18th February, we will try and arrange inspections prior to this date just submit an enquiry and you will be notified once something is scheduled.

To apply for the property hit the apply online button listed on [realestate.com.au](https://www.realestate.com.au).

**View :** <https://www.whitemanproperty.com.au/lease/nsw/central-coast-region/toowoon-bay/residential/unit/7383539>



**Laetitia Jones**  
**02 43841349**



GROUND FLOOR



APPROX. INT: 44m<sup>2</sup>  
APPROX. EXT: 12m<sup>2</sup>



Scale in metres. Indicative only. Dimensions are approximate. All information contained herein is gathered from sources we believe to be reliable. However we cannot guarantee its accuracy and interested persons should rely on their own enquiries