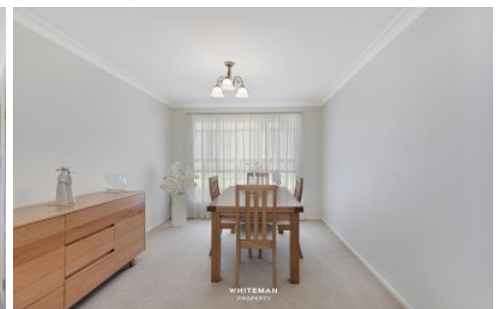


# WHITEMAN PROPERTY



## 83 Sir Joseph Banks Dr Bateau Bay NSW

4 2 2

The ultimate private beachside sanctuary, this spectacular contemporary home presents luxurious style, impressive quality and outstanding indoor/outdoor entertaining for a relaxed coastal lifestyle. This single level Mirvac home is only minutes to the beach and is guaranteed to impress with a private rear aspect backing onto bushland. Built to capture northern sun, stepping through this magnificent home you are met with an abundance of natural light and quality finishes.

Pristine in its presentation the finishes are designed to last the test of time. You'll love the spacious floorplan which is perfect for the growing family. Superbly positioned and just minutes to cafes, parks and the beach to enjoy all of the lifestyle benefits that this beachside suburb offers.

- Picturesque street appeal with manicured gardens; Easy

**View** : <https://www.whitemanproperty.com.au/lease/nsw/central-coast-region/bateau-bay/residential/house/7590617>



**Scott Falzon**  
02 4384 1349



**Georgie Crum**  
0450 973 916



SITE PLAN

APPROX. INT: 229m<sup>2</sup>  
 APPROX. LAND: 702m<sup>2</sup>



THE INFORMATION CONTAINED IN THIS DOCUMENT HAS BEEN PROVIDED BY THIRD PARTIES. WHITEMAN PROPERTY HAS NOT CHECKED THE INFORMATION AND MERELY PASSES IT ON, NOT HAVING A BELIEF ONE WAY OR THE OTHER AS TO ITS ACCURACY. INTERESTED PARTIES SHOULD MAKE AND RELY UPON THEIR OWN ENQUIRIES.



83 Sir Joseph Banks Drive, Bateau Bay

WHITEMAN  
PROPERTY