

WHITEMAN PROPERTY



28 Bellevue Street Shelly Beach NSW

3  2  2 

Perfectly set on a large 575sqm block of sun drenched land capturing panoramic views to Tuggerah lake. This solid family home presents the perfect opportunity for those seeking a fantastic beachside lifestyle. Extremely well maintained with a flexible floorplan and two living areas that each flow covered balconies to enjoy the sunset or alfresco entertaining. This great family home in a highly sought after and tightly held pocket, footsteps to Shelly Beach golf club, patrolled surf beach, dog friendly north shelly beach, a choice of local shops, cafes and amenities.

- Elevated with views through to Tuggerah Lake
- Two living areas with easy flow to the terrace to enjoy the sea breeze
- Updated kitchen with plenty of storage, adjacent dining room
- Fresh interiors, r/c air-con, ceiling fans, plantation

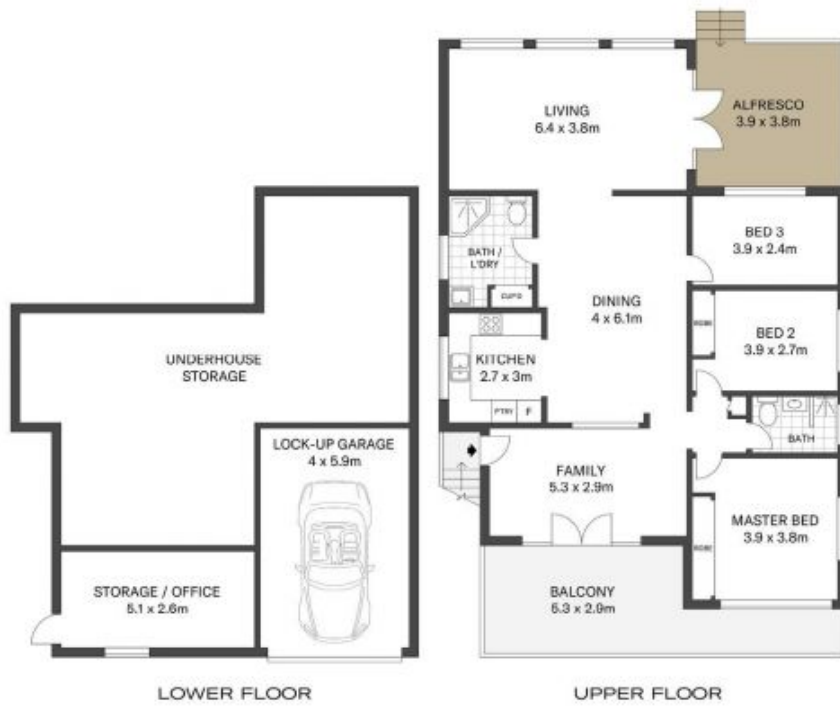
View : <https://www.whitemanproperty.com.au/lease/nsw/central-coast-region/shelly-beach/residential/house/7656583>



Scott Falzon
02 4384 1349



Georgie Crum
0450 973 916



LOWER FLOOR

UPPER FLOOR



SITE PLAN

APPROX. INT: 224m²
 LAND: 575m²



THE INFORMATION CONTAINED IN THIS DOCUMENT HAS BEEN PROVIDED BY THIRD PARTIES. THE AGENCY HAS NOT CHECKED THE INFORMATION AND MERELY PASSES IT ON, NOT HAVING A BELIEF ONE WAY OR THE OTHER AS TO ITS ACCURACY. INTERESTED PARTIES SHOULD MAKE AND RELY UPON THEIR OWN ENQUIRIES.



28 Bellevue Street, Shelly Beach
 WHITEMAN
 PROPERTY

WHITEMAN
 PROPERTY