

# WHITEMAN PROPERTY



**59A McLachlan Avenue Long Jetty NSW**

3  2  2 

Introducing the epitome of luxurious coastal living! Choice of two brand new villas. Immerse yourself in a world of quality craftsmanship and exquisite finishes that redefine the standard of modern elegance.

Step into a haven of natural light, where each room is thoughtfully designed to embrace the warmth of the sun. With generously sized bedrooms, your new villa offers ample space for relaxation and tranquillity, creating a true sanctuary for you and your loved ones.

Indulge in the blissful harmony of indoor-outdoor living with your very own grassy courtyard. Bask in the fresh air, host delightful gatherings, or simply unwind in your private outdoor oasis. This enchanting space promises moments

[For full version visit the website](https://www.whitemanproperty.com.au)

**Type** : Semi Detached

**Price** : \$ 1,250,000

**View** : <https://www.whitemanproperty.com.au/sale/nsw/central-coast-region/long-jetty/residential/semi-detached/7680790>

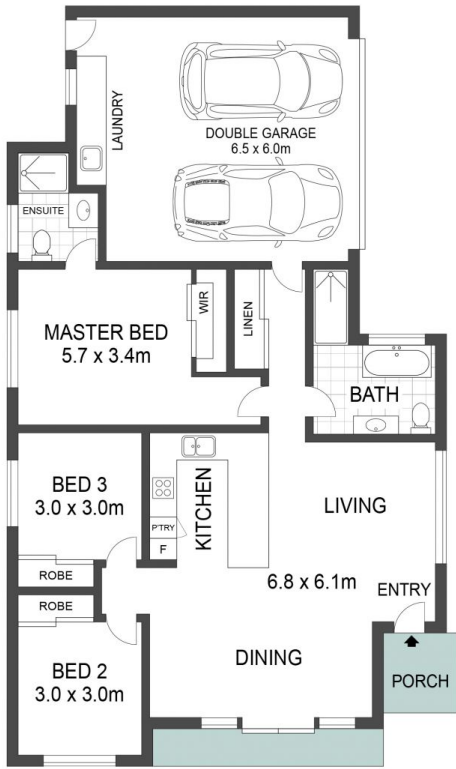


**Josh Froud**  
0414 322 888



**Brian Whiteman**  
02 4384 1349

<https://www.whitemanproperty.com.au>



FLOOR PLAN



SITE PLAN

APPROX. INT: 126m<sup>2</sup>

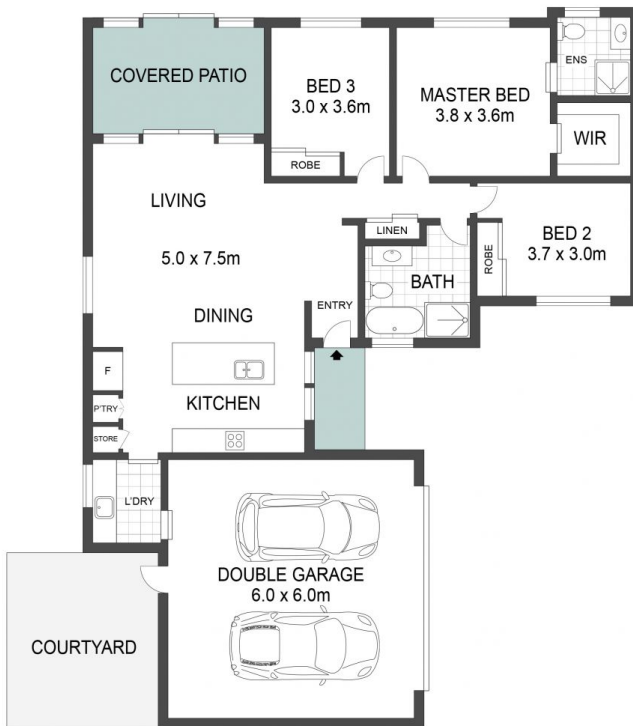


THE INFORMATION CONTAINED IN THIS DOCUMENT HAS BEEN PROVIDED BY THIRD PARTIES. WHITEMAN PROPERTY HAS NOT CHECKED THE INFORMATION AND MERELY PASSES IT ON, NOT HAVING A BELIEF ONE WAY OR THE OTHER AS TO ITS ACCURACY. INTERESTED PARTIES SHOULD MAKE AND RELY UPON THEIR OWN ENQUIRIES.



59 McLachlan Avenue, Long Jetty

WHITEMAN  
PROPERTY



FLOOR PLAN



SITE PLAN

APPROX. INT: 160m<sup>2</sup>



THE INFORMATION CONTAINED IN THIS DOCUMENT HAS BEEN PROVIDED BY THIRD PARTIES. WHITEMAN PROPERTY HAS NOT CHECKED THE INFORMATION AND MERELY PASSES IT ON, NOT HAVING A BELIEF ONE WAY OR THE OTHER AS TO ITS ACCURACY. INTERESTED PARTIES SHOULD MAKE AND RELY UPON THEIR OWN ENQUIRIES.



59A McLachlan Avenue, Long Jetty

WHITEMAN  
PROPERTY