

# WHITEMAN PROPERTY



## 23 Watkins Street Long Jetty NSW

3 2

Set on a sundrenched 676 sqm block of land a short distance to Toowoona Bay and Dog-Friendly North Shelly Beach, this charming cottage has been beautifully updated creating a comfortable family home with a separate studio/teenagers retreat. Perfectly liveable now with further opportunity to capitalise on this great location in the future.

- Beautifully updated cottage with rear studio
- Light-filled with 9-foot ceilings and updated kitchen
- Internal laundry, extra storage and flexible floorplan
- Large near level 676m2 block approx., north-east aspect
- Studio with kitchenette and bathroom, private side access
- Side street access and off street parking
- Easy 1km walk to Shelly Beach, Toowoona Bay and Long Jetty's café strip
- Only 90 minutes north of Sydney CBD

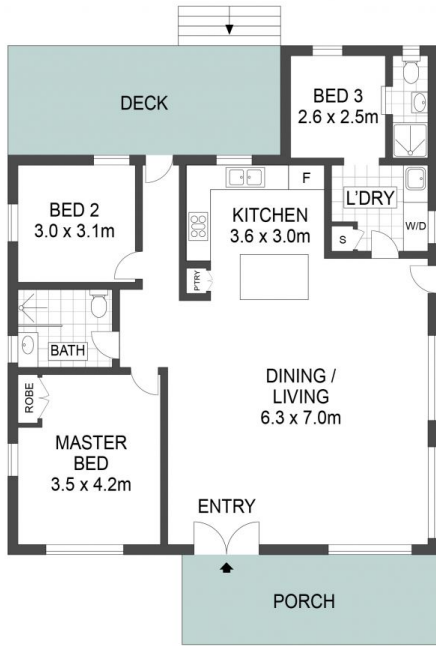
**Price** : Contact Agent  
**Building Size** : 119 sqm  
**Land Size** : 676 sqm  
**View** : <https://www.whitemanproperty.com.au/sale/nsw/central-coast-region/long-jetty/residential/house/7799441>



**Brian Whiteman**  
02 4384 1349



**Ricky Cavarra**  
02 4384 1349



FLOOR PLAN



SITE PLAN

APPROX. INT: 102m<sup>2</sup>  
 APPROX. LAND: 677m<sup>2</sup>



THE INFORMATION CONTAINED IN THIS DOCUMENT HAS BEEN PROVIDED BY THIRD PARTIES. WHITEMAN PROPERTY HAS NOT CHECKED THE INFORMATION AND MERELY PASSES IT ON, NOT HAVING A BELIEF ONE WAY OR THE OTHER AS TO ITS ACCURACY. INTERESTED PARTIES SHOULD MAKE AND RELY UPON THEIR OWN ENQUIRIES.



23 Watkins Street, Long Jetty

