

# WHITEMAN PROPERTY



## 10 Yulong Street Bateau Bay NSW

4 🛏 2 🚿 2 🚗

Relax and unwind in this stylish free-flowing home that celebrates outdoor entertaining across two levels and enjoys all the benefits of its beachside location. The immaculately transformed light-filled interiors showcase modern interiors and the flexible floorplan is great for established families. Located in a highly sought-after location just a short 500m walk to Bateau Bay beach and Wyrribalong coastal walk, this home epitomises a relaxed Coastal lifestyle.

- Immaculate street appeal that immediately impresses upon arrival
- Casual living and dining flow to a large sunroom and patio
- Large and light-filled bedrooms, three upstairs with adjoining bathroom
- Downstairs studio/bedroom or living area to configure to your family's needs

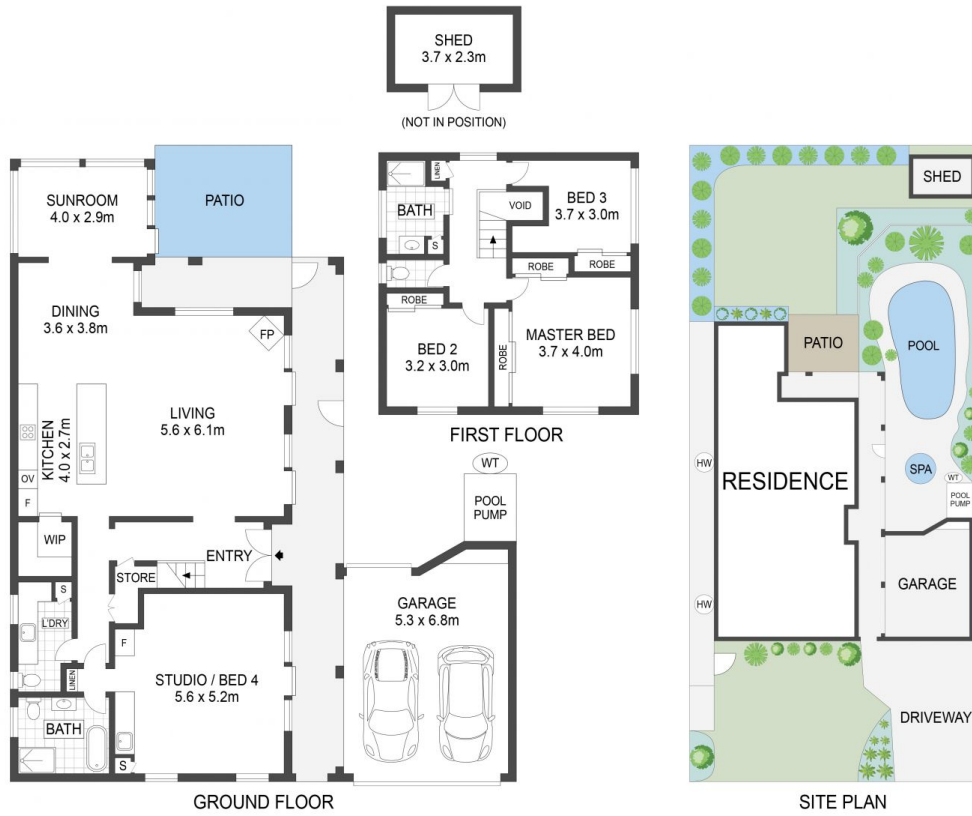
**Price** : \$ 1,950,000  
**Land Size** : 632 sqm  
**View** : <https://www.whitemanproperty.com.au/sale/nsw/central-coast-region/bateau-bay/residential/house/7808102>



**Brian Whiteman**  
02 4384 1349



**Ricky Cavarra**  
02 4384 1349



APPROX. INT: 190m<sup>2</sup>  
APPROX. LAND: 632m<sup>2</sup>



THE INFORMATION CONTAINED IN THIS DOCUMENT HAS BEEN PROVIDED BY THIRD PARTIES. WHITEMAN PROPERTY HAS NOT CHECKED THE INFORMATION AND MERELY PASSES IT ON, NOT HAVING A BELIEF ONE WAY OR THE OTHER AS TO ITS ACCURACY. INTERESTED PARTIES SHOULD MAKE AND RELY UPON THEIR OWN ENQUIRIES.



10 Yulong Street, Bateau Bay

WHITEMAN  
PROPERTY