

WHITEMAN PROPERTY



9 Bosun Close Bateau Bay NSW

3  1  1 

This original three-bedroom residence with a spacious backyard is set on a magnificent 538sqm block of land. Offering many possibilities and presenting an incredible opportunity for renovation or building your dream home. With its large living areas, formal lounge and dining room, outdoor entertaining, and proximity to the beach, this home is a true gem awaiting your personal touch.

Perfect for entertaining family and friends with an undercover pergola conveniently located off the open plan kitchen and living areas. The kitchen is spacious with ample storage and a stone island bench. Boasting separate living areas this home is perfect for the growing family. The master suite comes complete with ensuite and all bedrooms feature built in robes.

Located in a quiet cul-de-sac and surrounded by quality

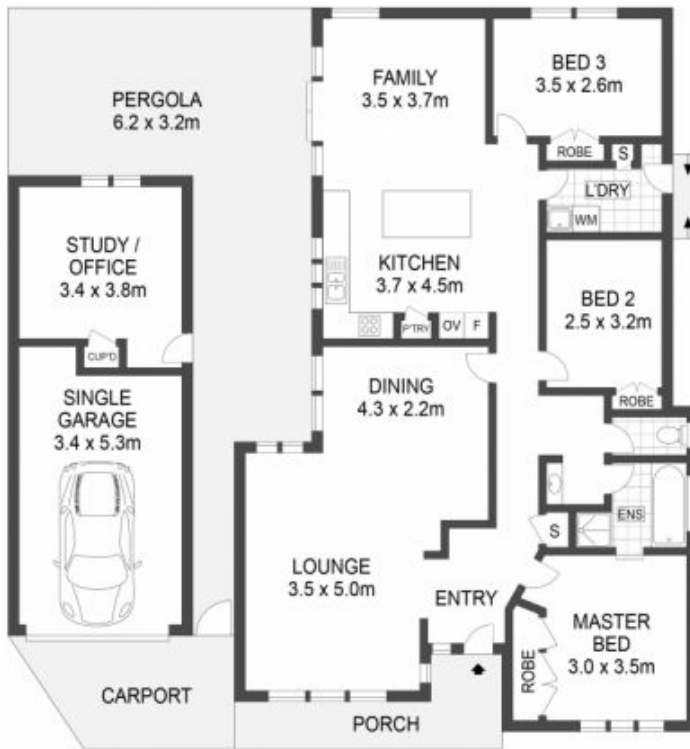
Price : Guide \$1,200,000 - \$1,300,000
Land Size : 538 sqm
View : <https://www.whitemanproperty.com.au/sale/nsw/central-coast-region/bateau-bay/residential/house/7934792>



Simon Mitrovich
02 4384 1349



Brian Whiteman
02 4384 1349



FLOOR PLAN



SITE PLAN
 APPROX. INT: 132m²
 APPROX. LAND: 538m²



THE INFORMATION CONTAINED IN THIS DOCUMENT HAS BEEN PROVIDED BY THIRD PARTIES. WHITEMAN PROPERTY HAS NOT CHECKED THE INFORMATION AND MERELY PASSES IT ON WITHOUT HAVING A BELIEF ONE WAY OR THE OTHER AS TO ITS ACCURACY. INTERESTED PARTIES SHOULD MAKE AND RELY UPON THEIR OWN ENQUIRIES.



9 Bosun Close, Bateau Bay

WHITEMAN
PROPERTY