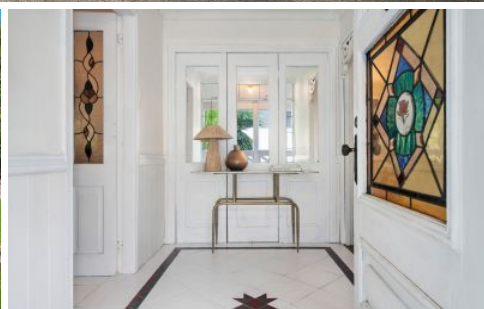
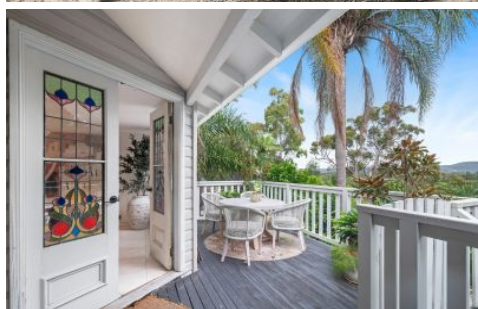


WHITEMAN PROPERTY



9 Wordsworth Avenue Bateau Bay NSW

6 3 2

Framed by stunning country-style gardens in the heart of Bateau Bay, this stylish residence is brimming with versatility. Peacefully positioned on a 822sqm block in a sought-after neighbourhood, this picture-perfect property is located in a quiet family friendly street.

Beautifully landscaped with manicured gardens, established trees and a fully fenced yard, the property is a sanctuary for families. Take in the picturesque outlook from the wrap around veranda or a choice of balconies. Elegantly updated, this stunning home reveals a family lounge and dining room bathed in natural light. Adjoining is the stone-topped kitchen, fitted with a quality stainless appliances.

Beautiful stained-glass doors open out to the private and sun-drenched rear garden offering expansive decking and

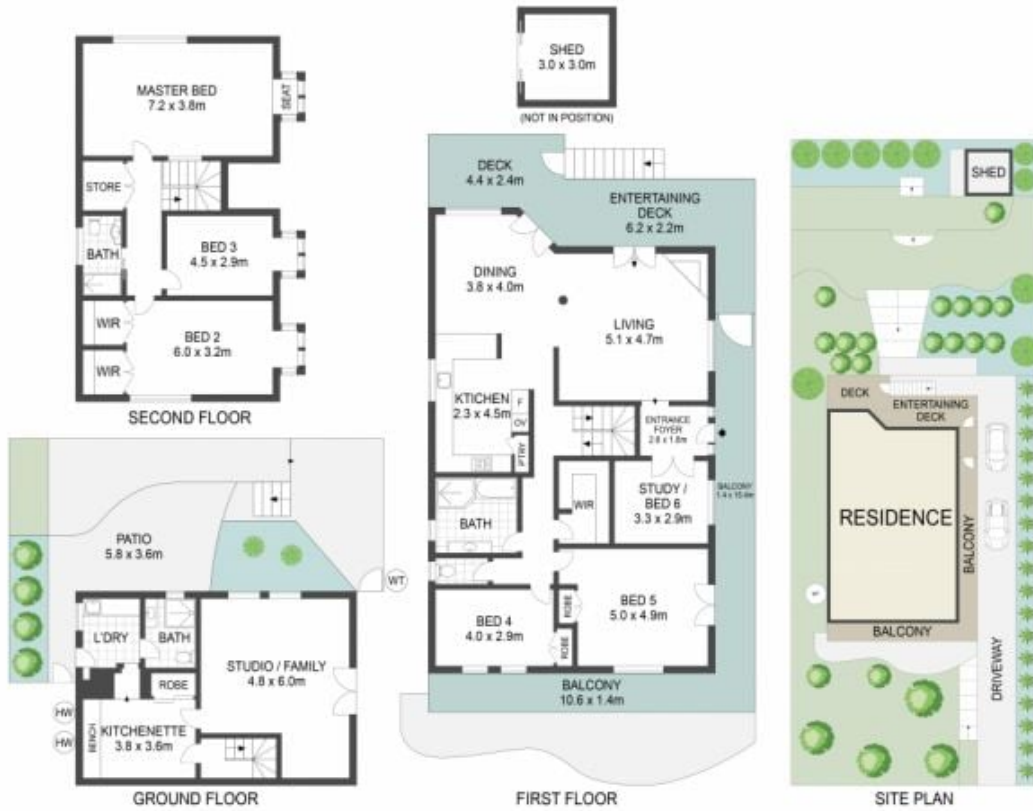
Price : Guide \$1,550,000
Land Size : 822 sqm
View : <https://www.whitemanproperty.com.au/sale/nsw/central-coast-region/bateau-bay/residential/house/7961918>



Simon Mitrovich
02 4384 1349



Ricky Cavarra
02 4384 1349



APPROX. INT: 273m²
 APPROX. LAND: 822m²



THE INFORMATION CONTAINED IN THIS DOCUMENT HAS BEEN PROVIDED BY THIRD PARTIES. WHITEMAN PROPERTY HAS NOT CHECKED THE INFORMATION AND MERELY PASSES IT ON WITHOUT HAVING A BELIEF ONE WAY OR THE OTHER AS TO ITS ACCURACY. INTERESTED PARTIES SHOULD MAKE AND RELY UPON THEIR OWN ENQUIRIES.



9 Wordsworth Avenue, Bateau Bay

WHITEMAN
PROPERTY