

WHITEMAN PROPERTY



55 Brush Road Wamberal NSW

4  2  3 

Perfectly located and nestled within the mountain, this breathtaking 4-bedroom property, spread across almost 5 acres, offers unmatched tranquillity and showcases an unparalleled outlook. Set amidst awe-inspiring bushland, this solid brick family home is set against a backdrop of lush established gardens, with established trees dotting the landscape. The North East facing aspect ensures sun-drenched mornings, further accentuating the property's grandeur.

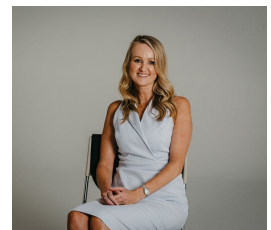
As you make your entrance through the tree lined driveway, a touch of sophistication welcomes you. The extensive car storage is a dream for enthusiasts, boasting room for up to 4 vehicles; with additional off-street parking.

Inside, the spacious single level layout presents generous living and dining areas designed for both intimate family

Price : Contact Agent
Land Size : 4.92 Acres
View : <https://www.whitemanproperty.com.au/sale/nsw/central-coast-region/wamberal/residential/acreagesemirural/7972534>



Brian Whiteman
02 4384 1349



Jennifer Whiteman
02 4384 1349



APPROX. INT: 259m²
 APPROX. LAND: 19,918m²



THE INFORMATION CONTAINED IN THIS DOCUMENT HAS BEEN PROVIDED BY THIRD PARTIES. WHITEMAN PROPERTY HAS NOT CHECKED THE INFORMATION AND MERELY PASSES IT ON WITHOUT HAVING A BELIEF ONE WAY OR THE OTHER AS TO ITS ACCURACY. INTERESTED PARTIES SHOULD MAKE AND RELY UPON THEIR OWN ENQUIRIES.

W 55 Brush Road, Wamberal

WHITEMAN
PROPERTY