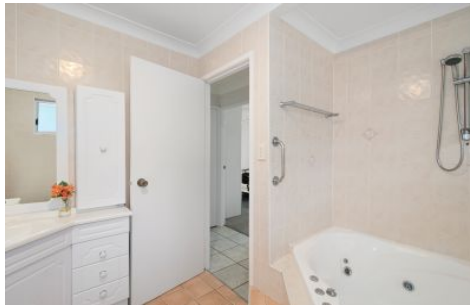


# WHITEMAN PROPERTY



## 4 Bosun Close Bateau Bay NSW

3 1 2

This perfect family home is nestled in the serene neighbourhood of Bateau Bay. With its generous land size and convenient location, this property offers a perfect blend of comfort and lifestyle.

**Price** : \$ 1,320,000  
**Building Size** : 110 sqm  
**Land Size** : 581 sqm  
**View** : <https://www.whitemanproperty.com.au/sale/nsw/central-coast-region/bateau-bay/residential/house/7973026>



**Brian Whiteman**  
02 4384 1349



**Ricky Cavarra**  
02 4384 1349