

WHITEMAN

PROPERTY



16 Valley View Road Bateau Bay NSW

3 1 4

This spacious family home offers a sought-after elevated position with outstanding scenic views. It features an open-plan living area, four bedrooms, an enclosed entertainers' terrace and sunny balcony. Designed for family comfort and impressive entertaining, this expansive home with multiple living areas is a statement of superb quality and style. This beautiful home is light filled with the perfect use of over-sized windows and glass doors throughout.

Conveniently located close to Bateau Bay Beach, cafes and schools, this home is a perfect blend of style, comfort, and location.

- Spacious kitchen with stone bench tops opens to dining and living
- Family room leading to a large covered entertainment

Price : Guide \$990,000
Land Size : 607 sqm
View : <https://www.whitemanproperty.com.au/sale/nsw/central-coast-region/bateau-bay/residential/house/7982954>

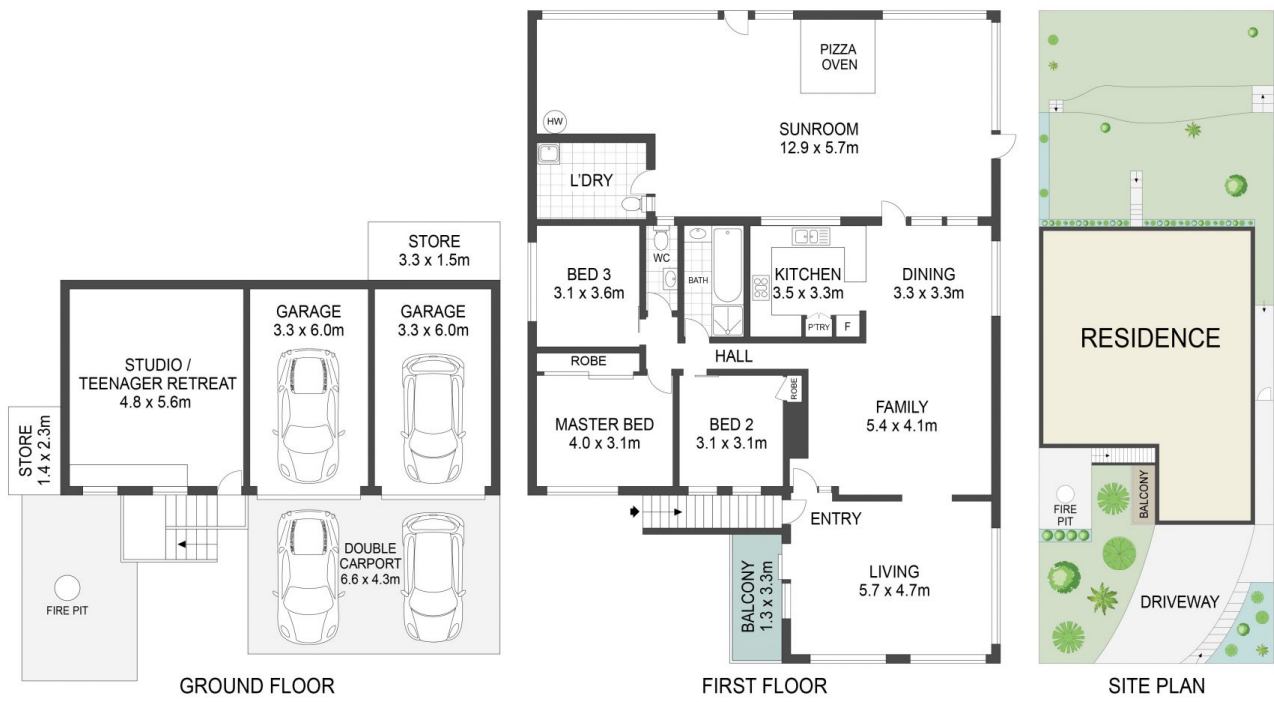


Brian Whiteman
02 4384 1349



Simon Mitrovich
02 4384 1349

<https://www.whitemanproperty.com.au>



APPROX. INT: 255m²
 APPROX. LAND: 607m²



THE INFORMATION CONTAINED IN THIS DOCUMENT HAS BEEN PROVIDED BY THIRD PARTIES. WHITEMAN PROPERTY HAS NOT CHECKED THE INFORMATION AND MERELY PASSES IT ON, NOT HAVING A BELIEF ONE WAY OR THE OTHER AS TO ITS ACCURACY. INTERESTED PARTIES SHOULD MAKE AND RELY UPON THEIR OWN ENQUIRIES.



16 Valley View Road, Bateau Bay

WHITEMAN
PROPERTY