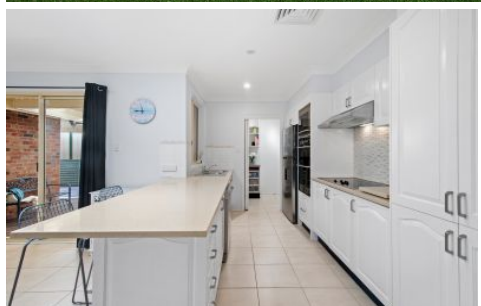


WHITEMAN PROPERTY



39 Morley Avenue Bateau Bay NSW

5 🛏 2 🚿 2 🚗

The ultimate private beachside sanctuary, this spectacular contemporary home presents luxurious style, impressive quality and outstanding indoor/outdoor entertaining for a relaxed coastal lifestyle. This single level family home is only minutes to the beach and is guaranteed to impress with private outdoor entertaining built to capture northern sun.

Pristine in its presentation the finishes are designed to last the test of time. You'll love the spacious floorplan which is perfect for the growing family boasting two living areas and spacious bedrooms. Stepping through this magnificent home you are met with an abundance of natural light and quality finishes

Situated on a 559sqm block, the property is perfectly located in a very central location with easy access to

Price : Contact Agent
Land Size : 559 sqm
View : <https://www.whitemanproperty.com.au/sale/nsw/central-coast-region/bateau-bay/residential/house/7990118>

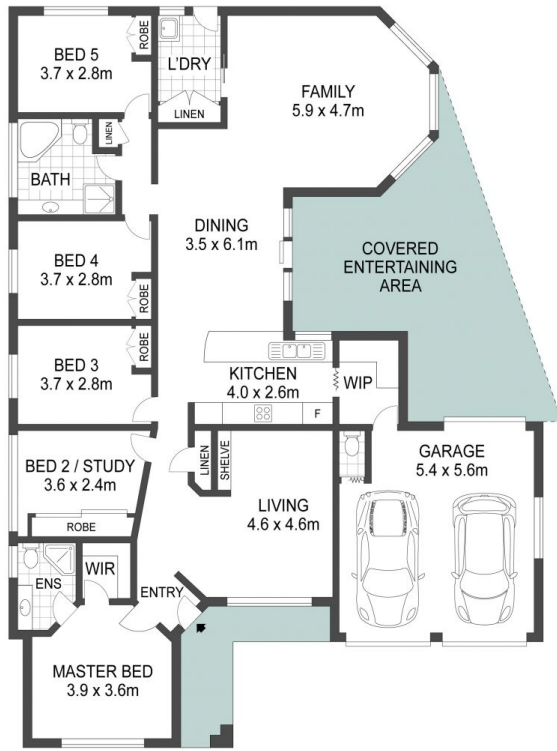


Brian Whiteman
02 4384 1349

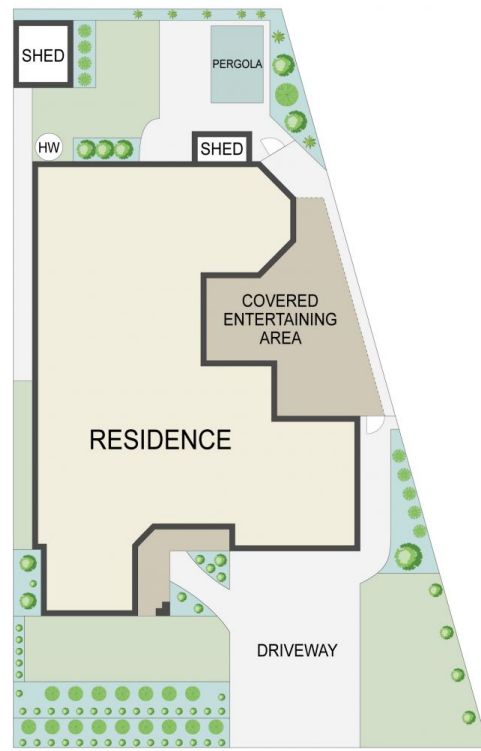


Simon Mitrovich
02 4384 1349

<https://www.whitemanproperty.com.au>



FLOOR PLAN



SITE PLAN

APPROX. INT: 191m²
 APPROX. LAND: 559m²



THE INFORMATION CONTAINED IN THIS DOCUMENT HAS BEEN PROVIDED BY THIRD PARTIES. WHITEMAN PROPERTY HAS NOT CHECKED THE INFORMATION AND MERELY PASSES IT ON, NOT HAVING A BELIEF ONE WAY OR THE OTHER AS TO ITS ACCURACY. INTERESTED PARTIES SHOULD MAKE AND RELY UPON THEIR OWN ENQUIRIES.



39 Morley Avenue, Bateau Bay

WHITEMAN
PROPERTY