

WHITEMAN PROPERTY



56A Liddell Street Shelly Beach NSW

4 3 2

Showcasing sweeping timeless interiors enhanced by soaring ceilings, premium quality finishes/inclusions and a chic open plan layout, this architect-inspired masterpiece is a world-class statement in luxury living and spectacular entertainment. Soaring across multiple levels with awe-inspiring high end finishes no expense has been spared to create the perfect lifestyle property.

Beautifully bespoke and taking design to superior heights, this near new residence is the epitome of Shelly Beach luxury with designer chef's kitchen, butler's pantry, built in study, powder room, four bedrooms over two levels as well as an impressive master suite with bench seat upon entry, walk in robe with beautiful cabinetry and luxurious ensuite complete with double shower head, stand-alone bath and

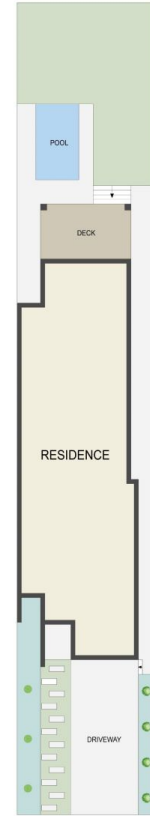
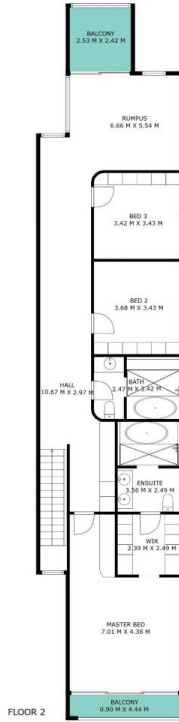
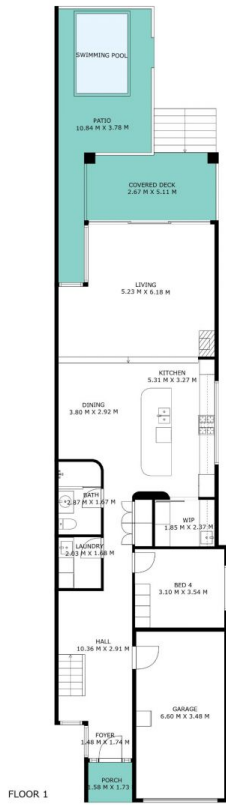
[For full version visit the website](https://www.whitemanproperty.com.au)

Type : Semi Detached
Price : \$ 2,075,000
Building Size : 274 sqm
View : <https://www.whitemanproperty.com.au/sale/nsw/central-coast-region/shelly-beach/residential/semi-detached/8037228>



Brian Whiteman
02 4384 1349

<https://www.whitemanproperty.com.au>



APPROX. INT: 272m²
 APPROX. LAND: 375m²



THE INFORMATION CONTAINED IN THIS DOCUMENT HAS BEEN PROVIDED BY THIRD PARTIES. WHITEMAN PROPERTY HAS NOT CHECKED THE INFORMATION AND MERELY PASSES IT ON, NOT HAVING A BELIEF ONE WAY OR THE OTHER AS TO ITS ACCURACY. INTERESTED PARTIES SHOULD MAKE AND RELY UPON THEIR OWN ENQUIRIES.



56A Liddell Street, Shelly Beach

WHITEMAN
PROPERTY