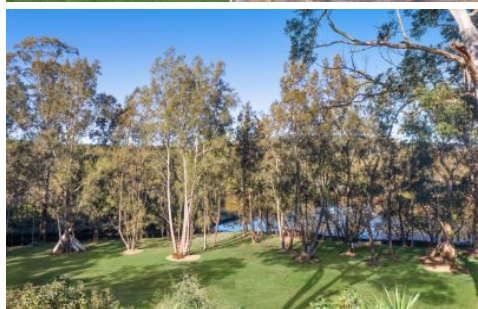


WHITEMAN PROPERTY



27 Marshdale Road Springfield NSW

3 2 6

This charming single level home is perfectly tucked away at the end of a cul-de-sac and is just minutes from the Gosford waterfront precinct. With a scenic outlook from all rooms, not only does it showcase district views but also offers acreage living on a private acre block.

Across an expansive single level, the home comprises three bedrooms, two bathrooms, chic central kitchen with stone island bench, alfresco patio, separate laundry with external access.

Built in circa 1930's, presentation is pristine throughout; features include tasteful fresh crisp décor, high ceilings, ducted air-conditioning, abundant glass to invite in light, stone benches, stainless steel appliances, gas cooktop,

[For full version visit the website](https://www.whitemanproperty.com.au)

Type : Acreage/Semi-Rural

Price : \$ 2,000,000

View : <https://www.whitemanproperty.com.au/sale/nsw/central-coast-region/springfield/residential/acreage/semirural/8071383>

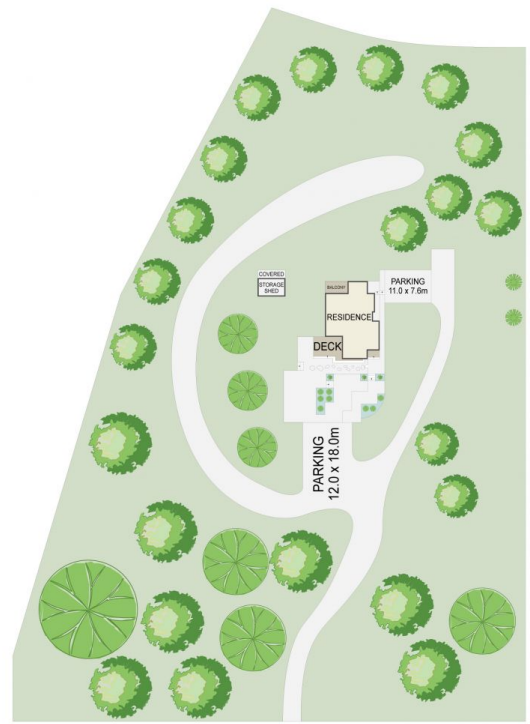
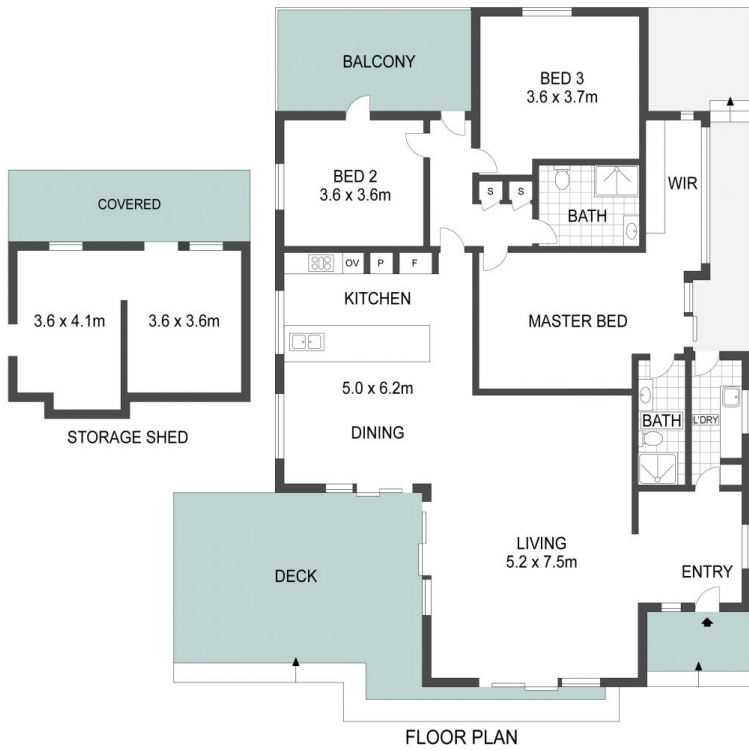


Brian Whiteman
02 4384 1349



Simon Mitrovich
02 4384 1349

<https://www.whitemanproperty.com.au>



APPROX. INT: 179m²
 APPROX. LAND: 1.04ha



THE INFORMATION CONTAINED IN THIS DOCUMENT HAS BEEN PROVIDED BY THIRD PARTIES. WHITEMAN PROPERTY HAS NOT CHECKED THE INFORMATION AND MERELY PASSES IT ON, NOT HAVING A BELIEF ONE WAY OR THE OTHER AS TO ITS ACCURACY. INTERESTED PARTIES SHOULD MAKE AND RELY UPON THEIR OWN ENQUIRIES.



27 Marshdale Road, Springfield

WHITEMAN
PROPERTY