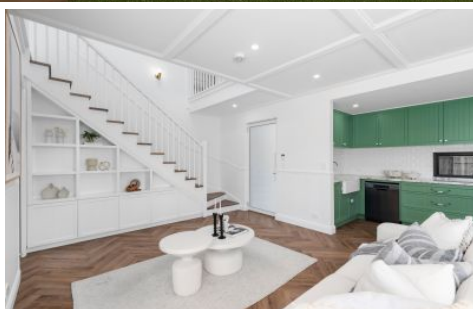


# WHITEMAN PROPERTY



1/10 Armidale Street The Entrance NSW

4  2  1 

This immaculate and newly built townhouse is a statement in luxury and is perfectly set in a boutique complex of only three. The interiors showcase premium finishes throughout, with effortless outdoor flow to a private, sunny entertaining area.

From the timber flooring to the stunning cabinetry throughout, the property is complemented with style and grace. Open-plan in design the home features an open dining and lounge area adjacent to the kitchen; leading out through large sliding glass doors to the al fresco paved entertaining terrace, lawn and low maintenance gardens.

Plenty of room too for the adults to entertain family and friends with a BBQ or cocktails or quite simply a space in

[For full version visit the website](https://www.whitemanproperty.com.au)

**Type** : Townhouse  
**Price** : \$ 1,154,000  
**View** : <https://www.whitemanproperty.com.au/sale/nsw/central-coast-region/the-entrance/residential/townhouse/8084342>



**Brian Whiteman**  
02 4384 1349



**Dan McLaren**  
02 4384 1349

