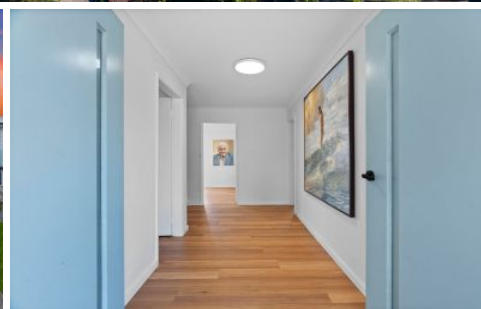


# WHITEMAN PROPERTY



## 132 Swadling Street Toowoan Bay NSW

5 🛏 2 🚿 2 🚗

Embracing a stunning beach house aesthetic, this sunny, fully renovated residence seamlessly caters for stylish modern living. It's perfectly set within walking distance of Toowoan Bay Beach, cafes and parks making it the perfect coastal retreat.

Tailor made for luxury coastal living, this family home encompasses a versatile floorplan designed to capture natural light and sea breezes through over-sized windows and sliding glass doors throughout. Offering abundant space, modern open plan layout and multiple living spaces its vast interiors flow seamlessly to a sunlit balcony and fully fenced yard perfect for children to play.

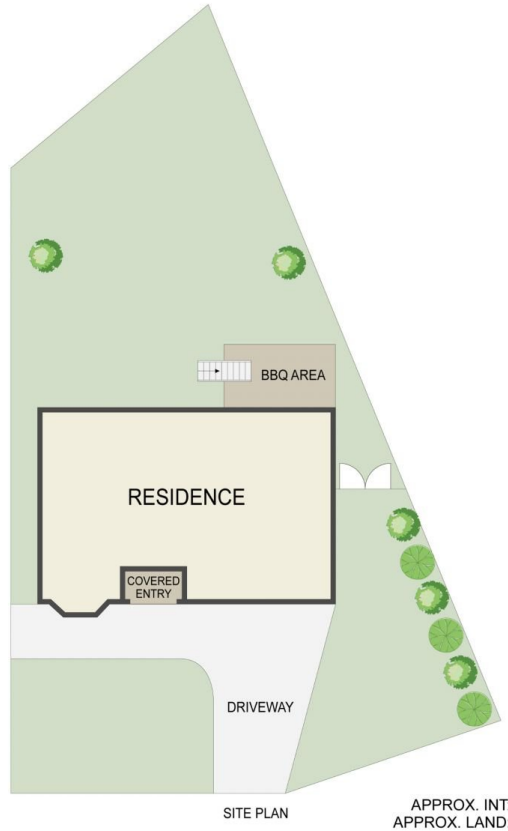
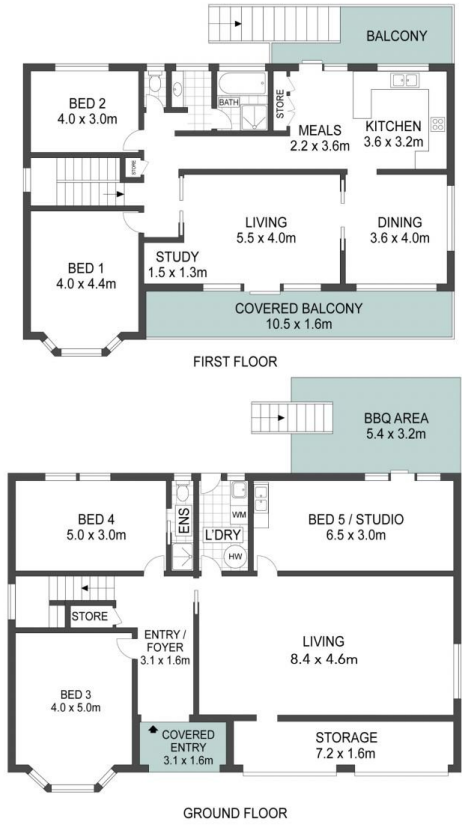
This spacious two-storey home offers a clever layout for

[For full version visit the website](https://www.whitemanproperty.com.au)

**Type** : House  
**Price** : Guide \$1,600,000  
**Land Size** : 604 sqm  
**View** : <https://www.whitemanproperty.com.au/sale/nsw/central-coast-region/toowoan-bay/residential/house/8218456>



**Brian Whiteman**  
02 4384 1349



THE INFORMATION CONTAINED IN THIS DOCUMENT HAS BEEN PROVIDED BY THIRD PARTIES. WHITEMAN PROPERTY HAS NOT CHECKED THE INFORMATION AND MERELY PASSES IT ON, NOT HAVING A BELIEF ONE WAY OR THE OTHER AS TO ITS ACCURACY. INTERESTED PARTIES SHOULD MAKE AND RELY UPON THEIR OWN ENQUIRIES.



132 Swadling Street, Toowoon Bay

