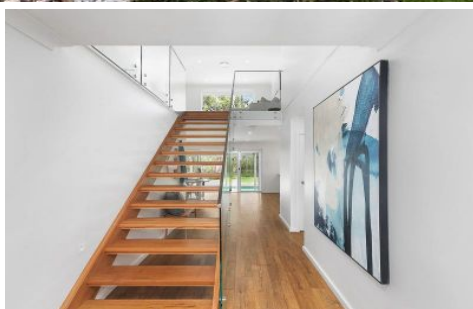


WHITEMAN PROPERTY



14 The Peninsula Avenue KILLARNEY VALE NSW

5 🚗 2 🚗 2 🚗

Set in a fantastic location across from Tuggerah lake and backing onto a private reserve, this sensational home provides multiple living spaces and ample accommodation over two spacious levels.

The open plan indoor/outdoor zones are perfect for large families or those who love to entertain. Minutes to Tuggerah lake and foreshore, great central coast schools, shops and beaches.

- Vast open plan living, dining and kitchen flows to covered alfresco
- Formal lounge/media room plus upstairs family room
- Sensational outdoor entertaining area and concrete pool
- Backing onto waterfront reserve; boat ramp at the end of

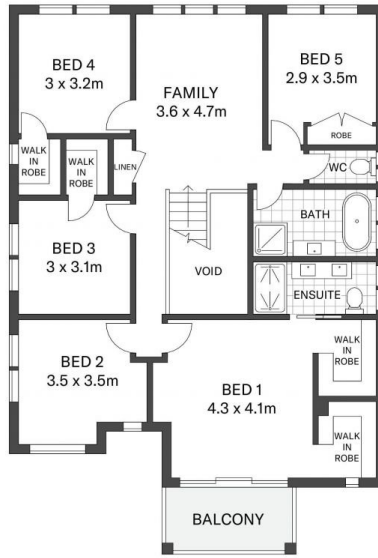
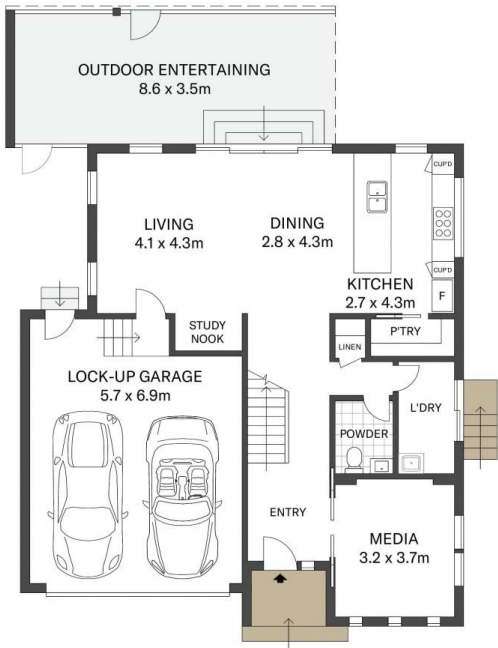
[For full version visit the website](https://www.whitemanproperty.com.au)

Type : House
Land Size : 538 sqm
View : <https://www.whitemanproperty.com.au/lease/nsw/central-coast-region/killarney-vale/residential/house/8221795>



Laetitia Jones
02 43841349

<https://www.whitemanproperty.com.au>



APPROX. INT: 252m²
 LAND: 538m²



THE INFORMATION CONTAINED IN THIS DOCUMENT HAS BEEN PROVIDED BY THIRD PARTIES. THE AGENCY HAS NOT CHECKED THE INFORMATION AND MERELY PASSES IT ON, NOT HAVING A BELIEF ONE WAY OR THE OTHER AS TO ITS ACCURACY. INTERESTED PARTIES SHOULD MAKE AND RELY UPON THEIR OWN ENQUIRIES.