

WHITEMAN PROPERTY



60 Lakin Street Bateau Bay NSW

4 2 2

Positioned in one of Bateau Bay's most tightly held streets, this newly finished home is the ultimate expression of coastal luxury - where form meets function and every detail has been considered. Just a 550m stroll to the beach and moments to village shops and cafés, this is a home that elevates everyday living.

Beyond its impressive street presence lies a home of warmth, scale, and sophisticated design. At its heart is a sun-drenched open-plan living zone, flowing seamlessly to a resort-style outdoor entertaining area, lush gardens, and a sparkling inground pool - designed for connection and relaxation.

- Striking street appeal in a quiet, tree-lined setting

[For full version visit the website](https://www.whitemanproperty.com.au)

Type : House
Price : \$ 2,310,000
Land Size : 546 sqm
View : <https://www.whitemanproperty.com.au/sale/nsw/central-coast-region/bateau-bay/residential/house/8324015>

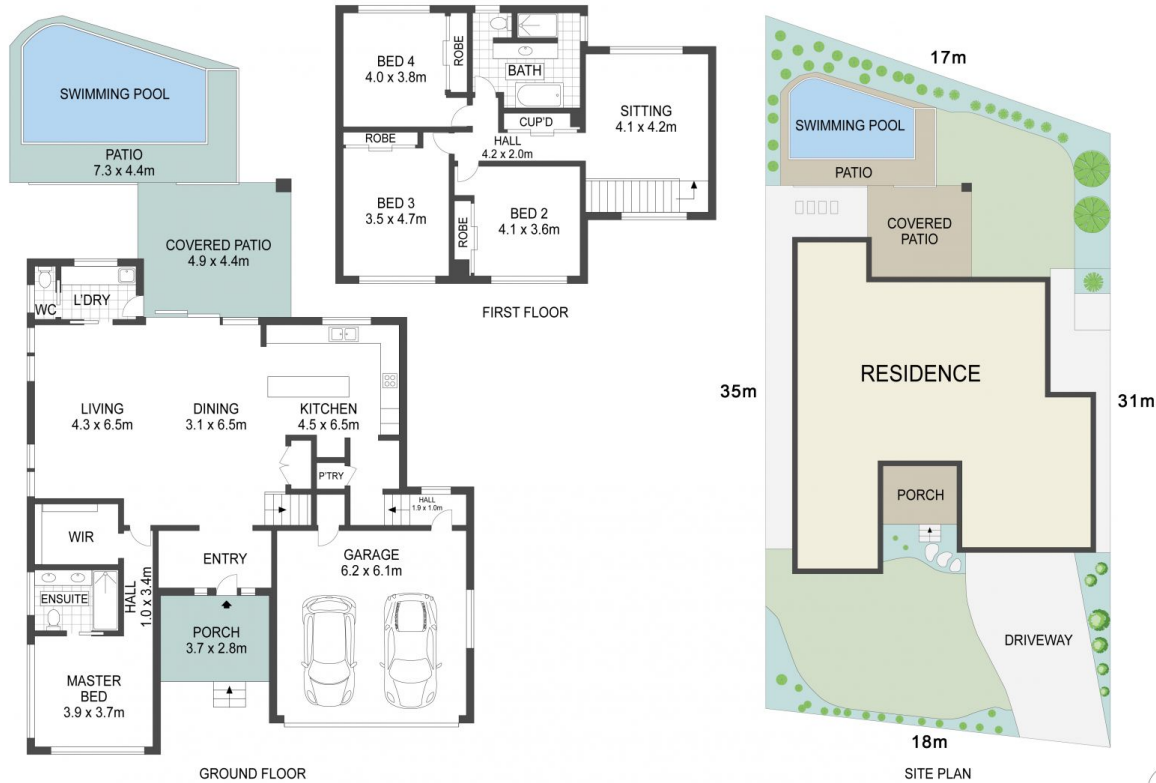


Brian Whiteman
02 4384 1349



Phoebe Chaseling
02 4384 1349

<https://www.whitemanproperty.com.au>



APPROX. INT: 210m²
 APPROX. LAND: 546m²



THE INFORMATION CONTAINED IN THIS DOCUMENT HAS BEEN PROVIDED BY THIRD PARTIES. WHITEMAN PROPERTY HAS NOT CHECKED THE INFORMATION AND MERELY PASSES IT ON, NOT HAVING A BELIEF ONE WAY OR THE OTHER AS TO ITS ACCURACY. INTERESTED PARTIES SHOULD MAKE AND RELY UPON THEIR OWN ENQUIRIES.



60 Lakin Street, Bateau Bay

WHITEMAN
PROPERTY