

WHITEMAN PROPERTY



593 The Entrance Road Bateau Bay NSW

2 1

Set on a generous elevated block with a sunny north-easterly aspect, this coastal-style home offers both comfort and potential. Featuring two oversized bedrooms, with bright and light, neutral colour scheme throughout, it's ready for you or your tenants to move straight in.

Perfect for investors, this quality property also presents a great opportunity to build a secondary dwelling at the rear of the block with existing DA approved plans in place. With a substantial amount of side access, also comes ample off street parking with a road base landing. Relax and entertain on the large covered deck, basking in the sea breezes and elevated district /water views toward Tuggerah Lake.

[For full version visit the website](https://www.whitemanproperty.com.au)

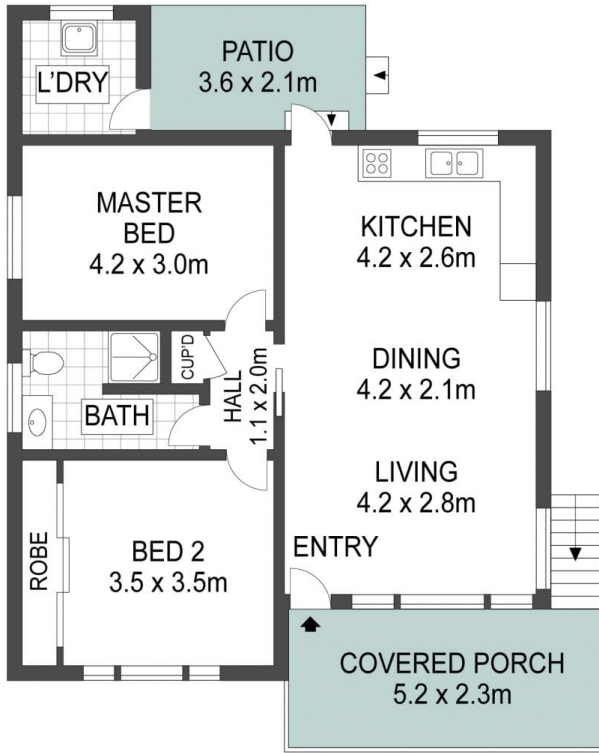
Type : House
Price : \$ 761,000
Building Size : 72 sqm
Land Size : 563 sqm
View : <https://www.whitemanproperty.com.au/sale/nsw/central-coast-region/bateau-bay/residential/house/8326734>



Ricky Cavarra
0449 528 985



Josh Froud
0414 322 888



FLOOR PLAN



SITE PLAN

APPROX. INT: 69m²
 APPROX. LAND: 563m²



THE INFORMATION CONTAINED IN THIS DOCUMENT HAS BEEN PROVIDED BY THIRD PARTIES. WHITEMAN PROPERTY HAS NOT CHECKED THE INFORMATION AND MERELY PASSES IT ON, NOT HAVING A BELIEF ONE WAY OR THE OTHER AS TO ITS ACCURACY. INTERESTED PARTIES SHOULD MAKE AND RELY UPON THEIR OWN ENQUIRIES.



593 The Entrance Road, Bateau Bay

WHITEMAN
PROPERTY