

WHITEMAN PROPERTY



2 Poplars Avenue Bateau Bay NSW

4  2  2 

Located in one of East Bateau Bay's most tightly held pockets, this single-level home blends practical design with a relaxed coastal lifestyle. Set just a 15-minute walk to Forresters Beach and moments to cafés, shops, and scenic bush trails, this home offers flexibility for downsizers, investors, or first-time buyers seeking ease and liveability.

Recently refreshed with new paintwork, plantation shutters, and exterior lighting, it offers inviting spaces for entertaining and unwinding - from sunny mornings in the front garden to sunset dinners on the covered rear deck. Designed with everyday comfort in mind, there's excellent separation between living and bedroom zones, great airflow, and a surprising amount of storage throughout.

[For full version visit the website](https://www.whitemanproperty.com.au)

Type : House
Price : \$ 1,190,000
Land Size : 466 sqm
View : <https://www.whitemanproperty.com.au/sale/nsw/central-coast-region/bateau-bay/residential/house/8328989>

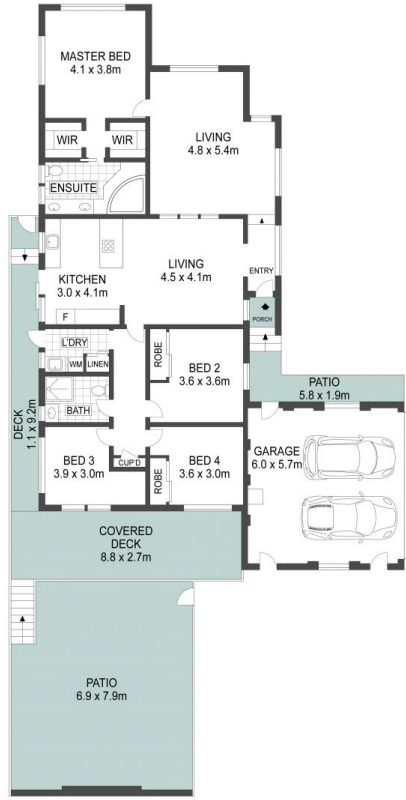


Phoebe Chaseling
02 4384 1349

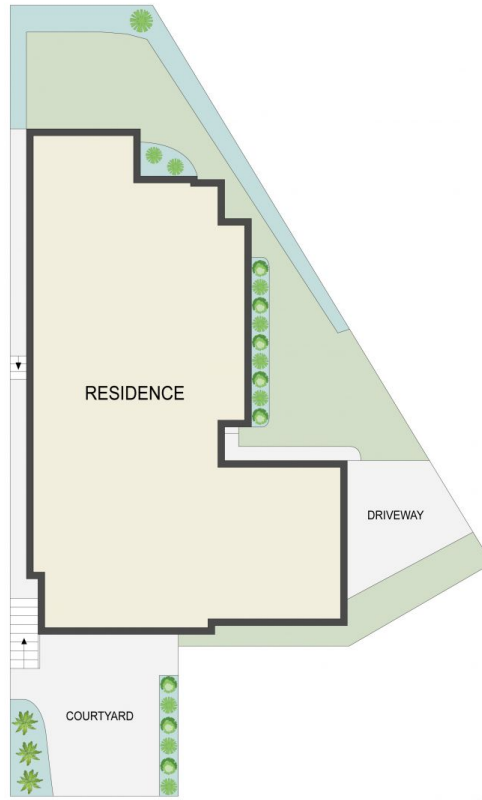


Brian Whiteman
02 4384 1349

<https://www.whitemanproperty.com.au>



FLOOR PLAN



SITE PLAN

APPROX. INT: 141m²
 APPROX. LAND: 446m²



THE INFORMATION CONTAINED IN THIS DOCUMENT HAS BEEN PROVIDED BY THIRD PARTIES. WHITEMAN PROPERTY HAS NOT CHECKED THE INFORMATION AND MERELY PASSES IT ON, NOT HAVING A BELIEF ONE WAY OR THE OTHER AS TO ITS ACCURACY. INTERESTED PARTIES SHOULD MAKE AND RELY UPON THEIR OWN ENQUIRIES.



2 Poplars Avenue, Bateau Bay

WHITEMAN
PROPERTY