



63 Boondilla Road Blue Bay NSW

4 3 2

A study in sculpted calm and coastal refinement, 63 Boondilla Road is a residence where every curve, finish and proportion has been crafted with intent. The architecture softens into flowing lines, skylit volumes and a palette drawn from sand, stone and sea. Inside, light filters through clerestory glazing, casting warmth across bespoke timber joinery and softly textured surfaces. The result is a single-level sanctuary that feels both grounded and elevated - a home that breathes, rests and welcomes in equal measure.

A Miele-appointed kitchen anchors the heart of the home, with curved stone, pendant lighting, hidden prep spaces and a dedicated butler's pantry. Living zones unfold seamlessly to a covered alfresco terrace framed by arched

Type : House

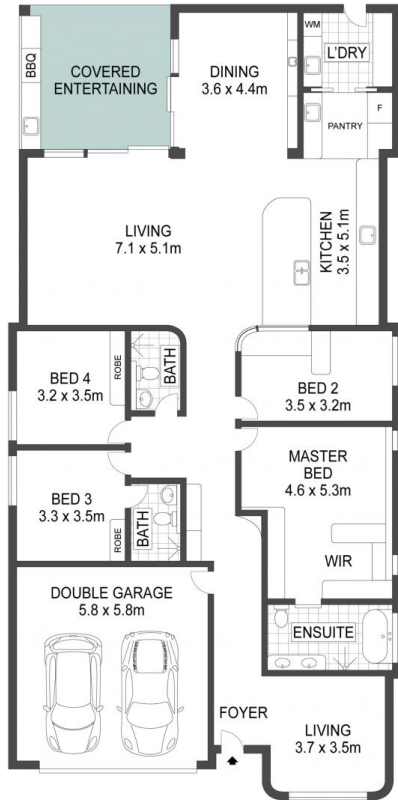
Price : Guide \$3,150,000

View : <https://www.whitemanproperty.com.au/sale/nsw/central-coast-region/blue-bay/residential/house/8558316>

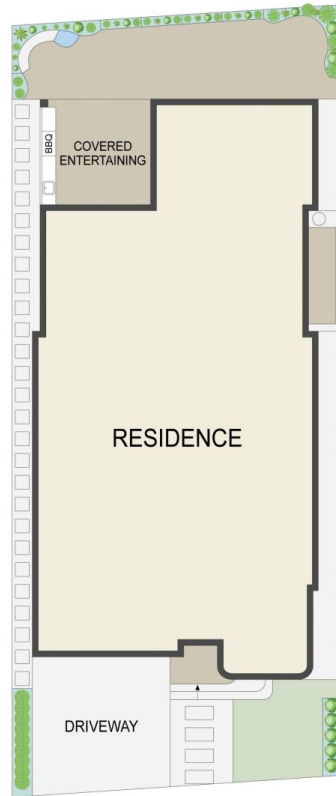


Simon Mitrovich
02 4384 1349

[For full version visit the website](https://www.whitemanproperty.com.au)



FLOOR PLAN



SITE PLAN

APPROX. INT: 258m²
 APPROX. LAND: 436m²



THE INFORMATION CONTAINED IN THIS DOCUMENT HAS BEEN PROVIDED BY THIRD PARTIES. WHITEMAN PROPERTY HAS NOT CHECKED THE INFORMATION AND MERELY PASSES IT ON, NOT HAVING A BELIEF ONE WAY OR THE OTHER AS TO ITS ACCURACY. INTERESTED PARTIES SHOULD MAKE AND RELY UPON THEIR OWN ENQUIRIES.

63 Boondilla Road, Blue Bay

