

WHITEMAN PROPERTY



30 Shakespeare Avenue Bateau Bay NSW

4 🛏 3 🚿 2 🚗

Tucked into a peaceful, tightly held East Bateau Bay setting, this generous family residence unfolds across multiple levels, generous proportions and a rare bushland backdrop that brings privacy and calm.

Designed for real family living, the home offers a choice of living zones, four well-scaled bedrooms and seamless connection to expansive decks and outdoor entertaining areas framed by established trees. Light filters through the interiors, the layout flows with ease, and every level reveals a different way to live - whether it's relaxed family time, quiet separation for growing households, or entertaining with nature as your backdrop.

Set on an impressive 695m² parcel with a deep 46-metre

[For full version visit the website](https://www.whitemanproperty.com.au/sale/nsw/central-coast-region/bateau-bay/residential/house/8602744)

Type : House
Price : Contact Agent
Land Size : 695.6 sqm
View : <https://www.whitemanproperty.com.au/sale/nsw/central-coast-region/bateau-bay/residential/house/8602744>

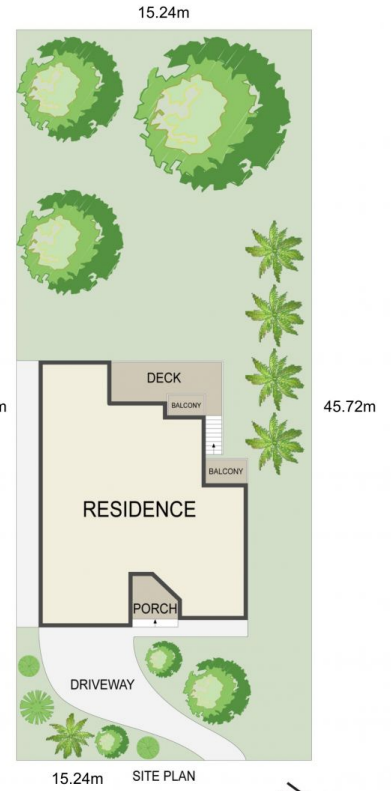
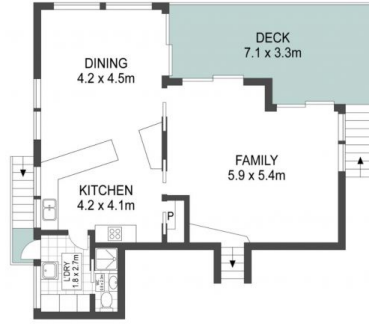
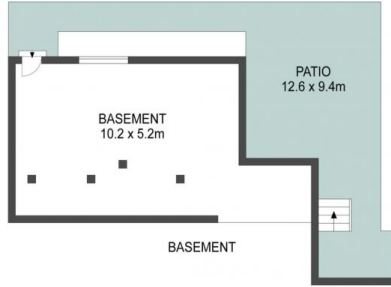
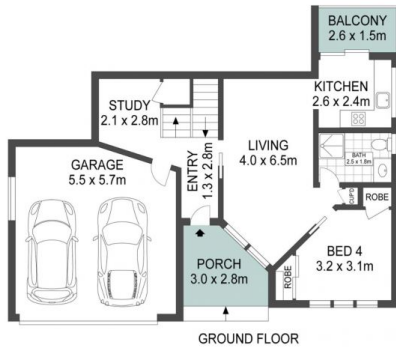


Phoebe Chaseling
02 4384 1349



Brian Whiteman
02 4384 1349

<https://www.whitemanproperty.com.au>



APPROX. INT: 229m²
 APPROX. LAND: 695.6m²



THE INFORMATION CONTAINED IN THIS DOCUMENT HAS BEEN PROVIDED BY THIRD PARTIES. WHITEMAN PROPERTY HAS NOT CHECKED THE INFORMATION AND MERELY PASSES IT ON, NOT HAVING A BELIEF ONE WAY OR THE OTHER AS TO ITS ACCURACY. INTERESTED PARTIES SHOULD MAKE AND RELY UPON THEIR OWN ENQUIRIES.



30 Shakespeare Avenue, Bateau Bay

WHITEMAN
PROPERTY