

# WHITEMAN PROPERTY



## 5 Serpentine Road Erina Heights NSW

4 1 2

Set on an expansive 879m<sup>2</sup> parcel backing directly onto a peaceful natural reserve, this character-filled residence combines privacy, space, and convenience in one of Erina Heights' most accessible locations. Elevated to capture leafy outlooks from the modern kitchen and living areas, the home offers warmth, charm, and immediate comfort, all within moments of schools, cafés, Erina Fair, and the Central Coast's most sought-after beaches.

Timber floorboards, classic cornices, and cottage-style features create a home rich in personality, while the spacious upper-level parents' retreat provides a peaceful and private escape with built-in robe and elevated outlook. Reverse cycle air conditioning, stainless steel appliances, and thoughtful updates enhance everyday living, while

**Type** : House  
**Price** : Contact Agent  
**Land Size** : 879 sqm  
**View** : <https://www.whitemanproperty.com.au/sale/nsw/central-coast-region/erina-heights/residential/house/8631649>



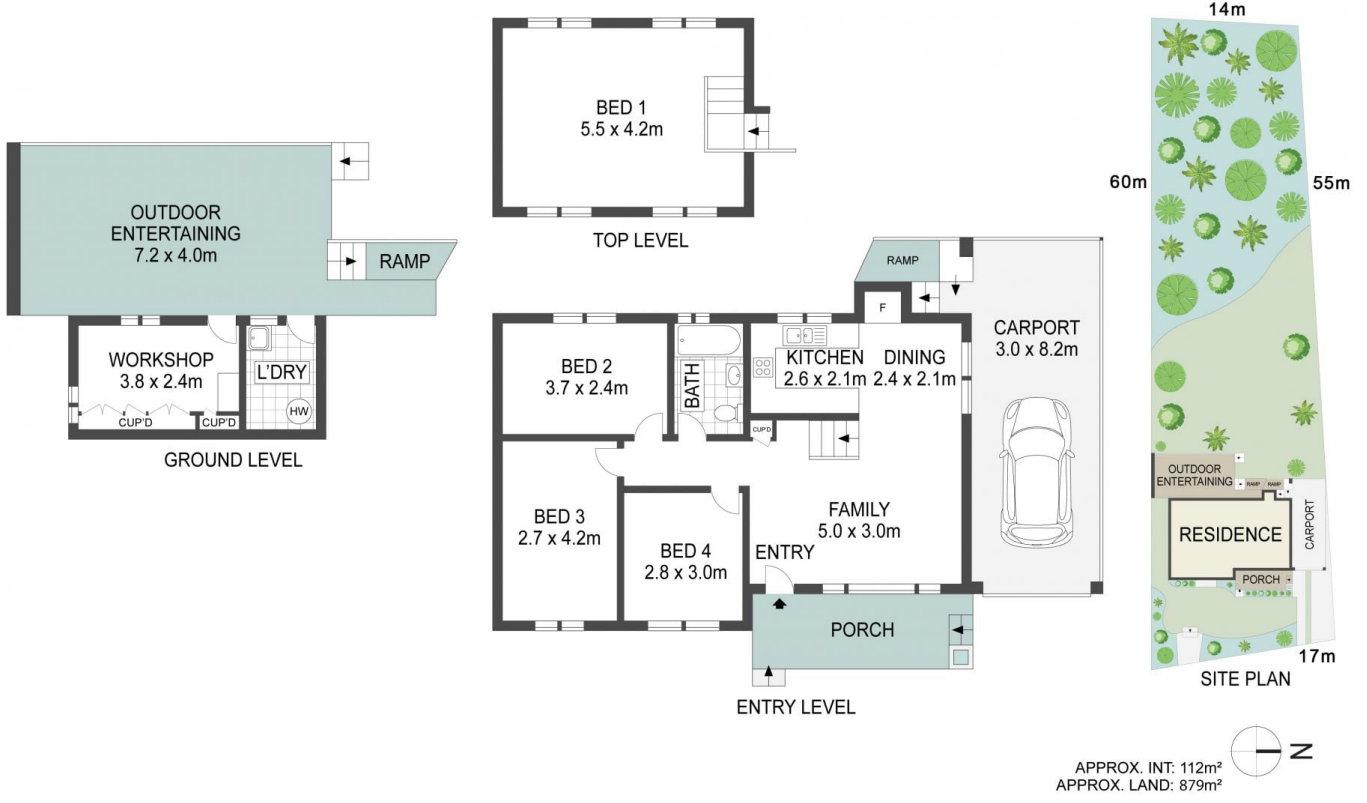
**Brian Whiteman**  
02 4384 1349



**Jennifer Whiteman**  
02 4384 1349

[For full version visit the website](#)

<https://www.whitemanproperty.com.au>



THE INFORMATION CONTAINED IN THIS DOCUMENT HAS BEEN PROVIDED BY THIRD PARTIES. WHITEMAN PROPERTY HAS NOT CHECKED THE INFORMATION AND MERELY PASSES IT ON, NOT HAVING A BELIEF ONE WAY OR THE OTHER AS TO ITS ACCURACY. INTERESTED PARTIES SHOULD MAKE AND RELY UPON THEIR OWN ENQUIRIES.



5 Serpentine Road, Erina Heights

