

WHITEMAN PROPERTY



58 Koorinda Avenue Long Jetty NSW

4  2  2 

Positioned in a coveted coastal pocket, 750 metres from Shelly Beach Golf Club, this custom-built (Dec 2024) residence presents as a near-new home designed with scale, flexibility and everyday functionality in mind. Offering four oversized bedrooms, a dedicated home office and two separate living areas anchored by a central open-plan kitchen, living and dining zone, the home provides generous proportions and seamless flow throughout. With modern construction, multiple living zones and quality finishes, it is ideally suited to families seeking a low-maintenance coastal home with space to grow, professionals working from home, or buyers wanting the certainty of a near-new build in an established coastal location.

Type : House
Price : \$ 2,225,000
Land Size : 696 sqm
View : <https://www.whitemanproperty.com.au/sale/nsw/central-coast-region/long-jetty/residential/house/8632081>



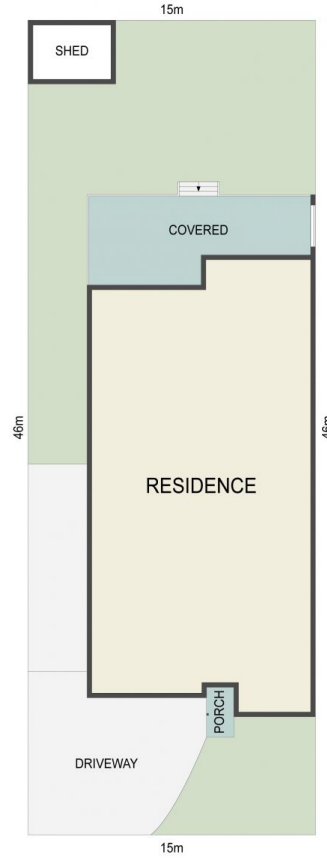
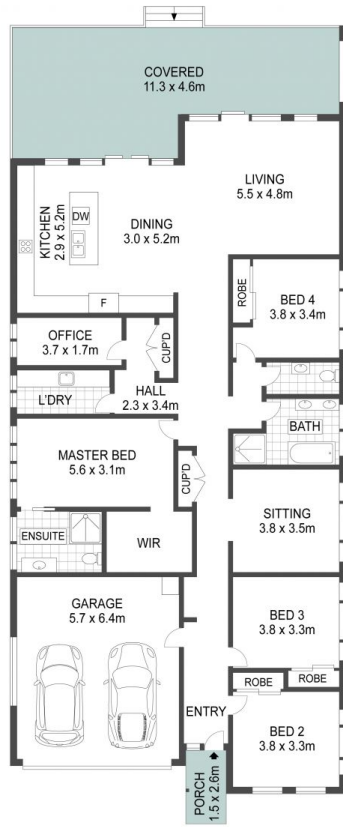
Brian Whiteman
02 4384 1349



Simon Mitrovich
02 4384 1349

[For full version visit the website](https://www.whitemanproperty.com.au)

<https://www.whitemanproperty.com.au>



APPROX. INT: 215m²
 APPROX. LAND: 696m²



THE INFORMATION CONTAINED IN THIS DOCUMENT HAS BEEN PROVIDED BY THIRD PARTIES. WHITEMAN PROPERTY HAS NOT CHECKED THE INFORMATION AND MERELY PASSES IT ON, NOT HAVING A BELIEF ONE WAY OR THE OTHER AS TO ITS ACCURACY. INTERESTED PARTIES SHOULD MAKE AND RELY UPON THEIR OWN ENQUIRIES.



58 Koorinda Avenue, Long Jetty

WHITEMAN
PROPERTY