

WHITEMAN PROPERTY



106 Lakedge Avenue Berkeley Vale NSW

4  2  2 

Set just moments from the shoreline of Tuggerah Lake, this spacious dual-level residence delivers the kind of lifestyle that's becoming harder to find - generous in scale, flexible in design and centred around effortless indoor-outdoor living.

Positioned on the high side of the street on 551sqm parcel with a wide 15m frontage, the home offers a practical layout designed to adapt with you. Upstairs, open plan living, dining and kitchen form the heart of the home, filled with natural light and flowing seamlessly onto a balcony that captures elevated outlooks and lake views.

The kitchen is well-appointed with a central island and ample storage, connecting easily to the dining and living

[For full version visit the website](https://www.whitemanproperty.com.au/sale/nsw/central-coast-region/berkeley-vale/residential/house/8650046)

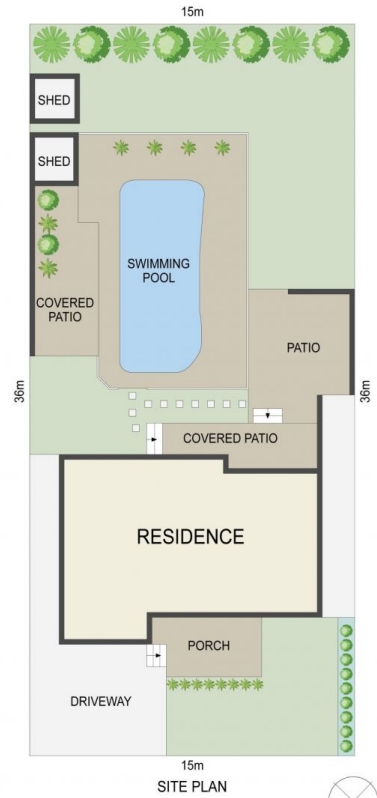
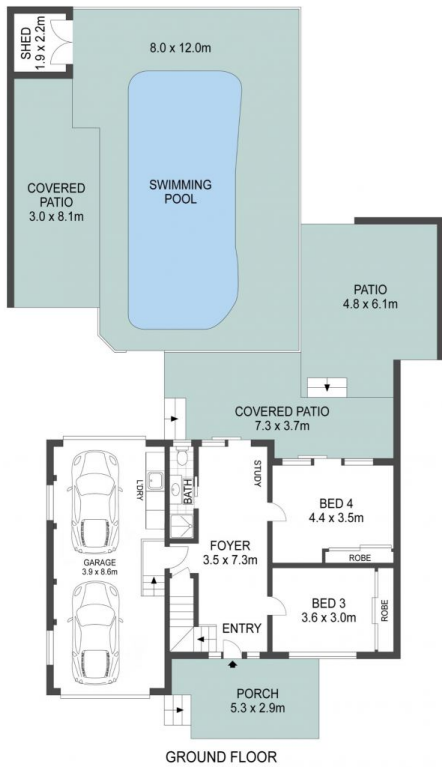
Type : House
Price : \$ 1,260,000
Land Size : 551 sqm
View : <https://www.whitemanproperty.com.au/sale/nsw/central-coast-region/berkeley-vale/residential/house/8650046>



Brian Whiteman
02 4384 1349



Phoebe Chaseling
02 4384 1349



APPROX. INT: 144m²
 APPROX. LAND: 551m²



THE INFORMATION CONTAINED IN THIS DOCUMENT HAS BEEN PROVIDED BY THIRD PARTIES. WHITEMAN PROPERTY HAS NOT CHECKED THE INFORMATION AND MERELY PASSES IT ON, NOT HAVING A BELIEF ONE WAY OR THE OTHER AS TO ITS ACCURACY. INTERESTED PARTIES SHOULD MAKE AND RELY UPON THEIR OWN ENQUIRIES.

106 Lakedge Avenue, Berkeley Vale

