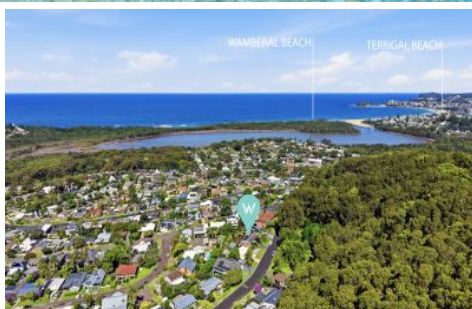


WHITEMAN PROPERTY



52 Aldinga Drive Wamberal NSW

4 🏠 3 🚗 1 🚘

Elevated above the surrounding landscape, this residence captures a sweeping outlook that stretches across lush greenery to the coastline, where the ocean becomes part of everyday living. Designed to embrace its position, the home opens effortlessly to expansive decking and outdoor zones, creating a natural connection between indoor living and the view beyond.

The main living level is light-filled and open, with a seamless flow from lounge to deck, where undercover entertaining takes centre stage. The kitchen sits at the heart of the home, offering generous space, stainless appliances and a direct connection to both dining and outdoor areas. Whether it's quiet mornings overlooking the water or long afternoons by the pool, this is a home built

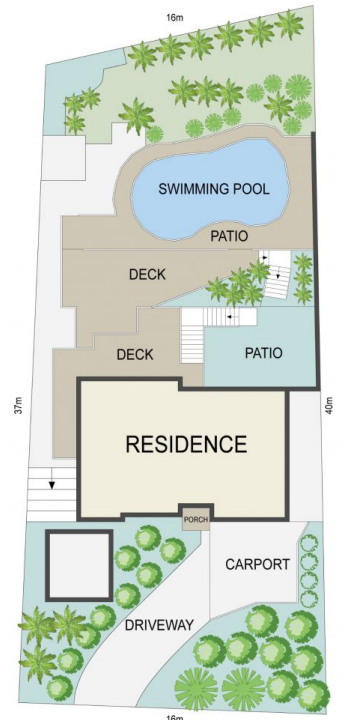
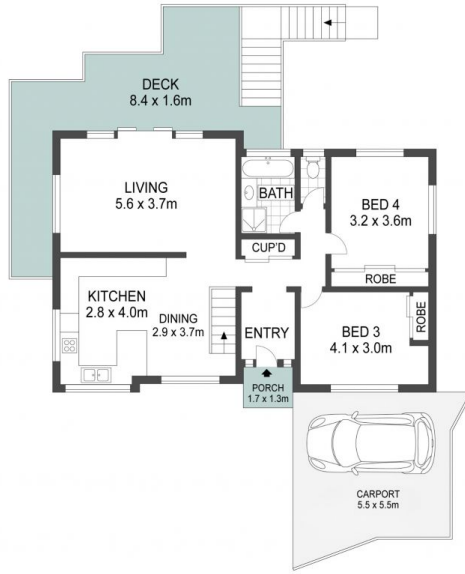
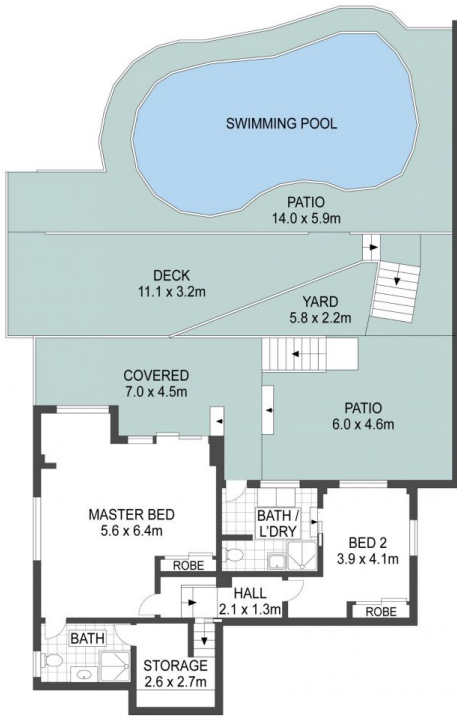
[For full version visit the website](https://www.whitemanproperty.com.au)

Type : House
Price : Contact Agent
Land Size : 606 sqm
View : <https://www.whitemanproperty.com.au/sale/nsw/central-coast-region/wamberal/residential/house/8655415>



Simon Mitrovich
02 4384 1349

<https://www.whitemanproperty.com.au>



APPROX. INT: 157m²
 APPROX. LAND: 606m²



THE INFORMATION CONTAINED IN THIS DOCUMENT HAS BEEN PROVIDED BY THIRD PARTIES. WHITEMAN PROPERTY HAS NOT CHECKED THE INFORMATION AND MERELY PASSES IT ON, NOT HAVING A BELIEF ONE WAY OR THE OTHER AS TO ITS ACCURACY. INTERESTED PARTIES SHOULD MAKE AND RELY UPON THEIR OWN ENQUIRIES.

52 Aldinga Drive, Wamberal

