

WHITEMAN PROPERTY



2/21 Thompson Street Long Jetty NSW

3  2  1 

Brand new and beautifully executed, this contemporary coastal residence delivers style, space, and sophistication just moments from the lake and beach. Part of an exclusive new complex, it's designed for easy living with a focus on natural light, timeless finishes, and quality craftsmanship throughout.

Spread over two levels, the home opens to an inviting living and dining zone with engineered timber flooring and a sleek stone kitchen with an island bench and premium appliances. Upstairs, three spacious bedrooms include a tranquil master with ensuite and balcony access, while the additional bedrooms feature built-in robes and plush carpeting. Every detail has been carefully considered - from ducted air conditioning and designer bathrooms to the

[For full version visit the website](https://www.whitemanproperty.com.au)

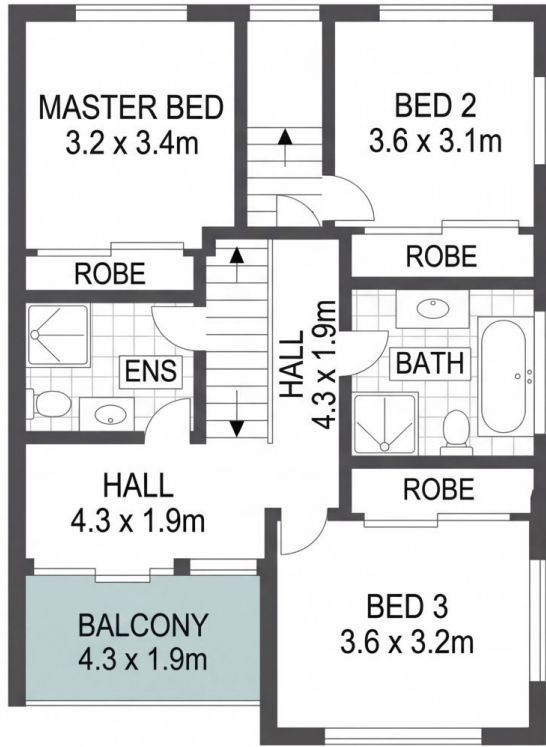
Type : Townhouse
Price : Guide \$1,150,000
View : <https://www.whitemanproperty.com.au/sale/nsw/central-coast-region/long-jetty/residential/townhouse/8658364>



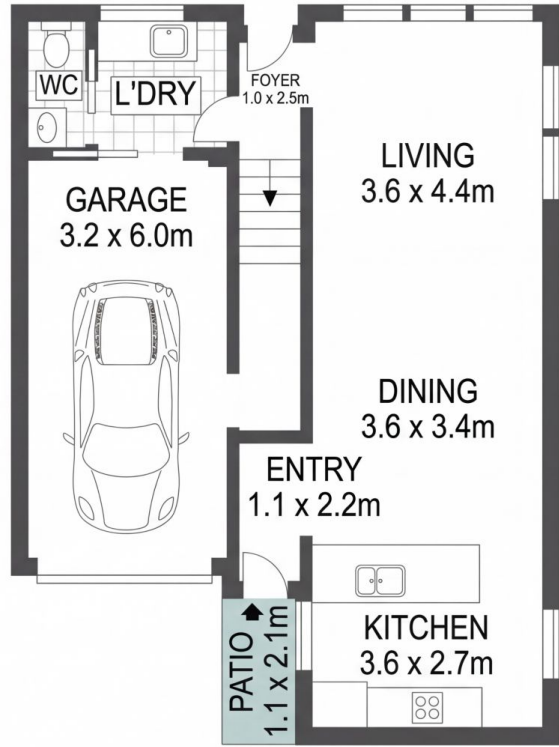
Brian Whiteman
02 4384 1349



Simon Mitrovich
02 4384 1349



FIRST FLOOR



GROUND FLOOR

APPROX. INT: 126m²



THE INFORMATION CONTAINED IN THIS DOCUMENT HAS BEEN PROVIDED BY THIRD PARTIES. WHITEMAN PROPERTY HAS NOT CHECKED THE INFORMATION AND MERELY PASSES IT ON, NOT HAVING A BELIEF ONE WAY OR THE OTHER AS TO ITS ACCURACY. INTERESTED PARTIES SHOULD MAKE AND RELY UPON THEIR OWN ENQUIRIES.

2/21 Thompson Street, Long Jetty

