

WHITEMAN PROPERTY



50 Thompson Street Long Jetty NSW

4  2  2 

There's a quiet confidence to this home from the moment you arrive. Tucked within a tightly held cul-de-sac, it delivers a refined coastal lifestyle where every detail has been thoughtfully considered and nothing has been left to chance.

Designed as a single-level residence with architectural intent, the home unfolds through soft curves, natural textures and an abundance of light. At its centre, expansive open plan living and dining spaces connect seamlessly to multiple outdoor zones, creating a home that feels both grounded and effortlessly connected to its surroundings.

At the heart of the home, the kitchen anchors daily living and entertaining with equal ease. A striking stone island,

[For full version visit the website](https://www.whitemanproperty.com.au)

Type : House
Price : Contact Agent
Land Size : 670 sqm
View : <https://www.whitemanproperty.com.au/sale/nsw/central-coast-region/long-jetty/residential/house/8663660>

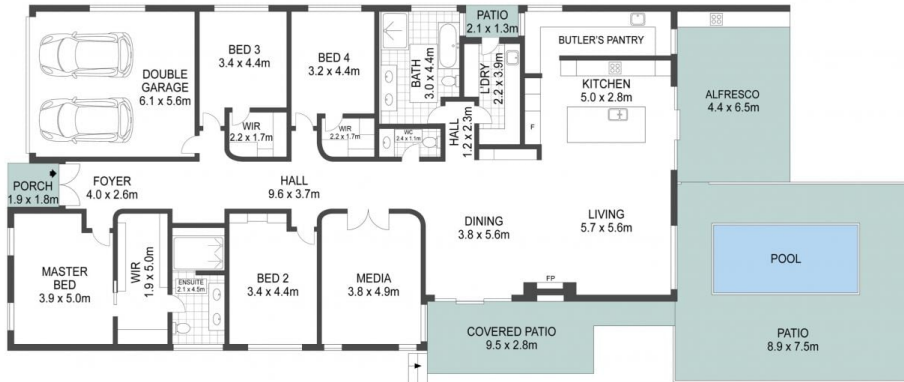


Simon Mitrovich
02 4384 1349

<https://www.whitemanproperty.com.au>



SITE PLAN



FLOOR PLAN

APPROX. INT: 252m²
 APPROX. LAND: 670m²



THE INFORMATION CONTAINED IN THIS DOCUMENT HAS BEEN PROVIDED BY THIRD PARTIES. WHITEMAN PROPERTY HAS NOT CHECKED THE INFORMATION AND MERELY PASSES IT ON, NOT HAVING A BELIEF ONE WAY OR THE OTHER AS TO ITS ACCURACY. INTERESTED PARTIES SHOULD MAKE AND RELY UPON THEIR OWN ENQUIRIES.

50 Thompson Street, Long Jetty

