

WHITEMAN PROPERTY



36B Bay Road Blue Bay NSW

4 2 2

Set privately to the rear approx. 500m walk to Blue Bay Beach, this single level home offers space, functionality and a layout that simply works. Designed for easy living, it opens into generous interiors where kitchen, dining and living come together in one cohesive space, all flowing out to a private outdoor setting.

The home balances comfort and practicality, with well-separated bedrooms, a master suite with ensuite, and a layout that gives both connection and privacy. Outdoors, the yard is low-maintenance yet usable - a rare combination - with space to entertain, relax or just enjoy the quiet position.

- Three well-proportioned bedrooms, all with built-in storage

[For full version visit the website](https://www.whitemanproperty.com.au/sale/nsw/central-coast-region/blue-bay/residential/house/8680464)

Type : House
Price : Auction Guide \$1,300,000
Land Size : 478 sqm
View : <https://www.whitemanproperty.com.au/sale/nsw/central-coast-region/blue-bay/residential/house/8680464>

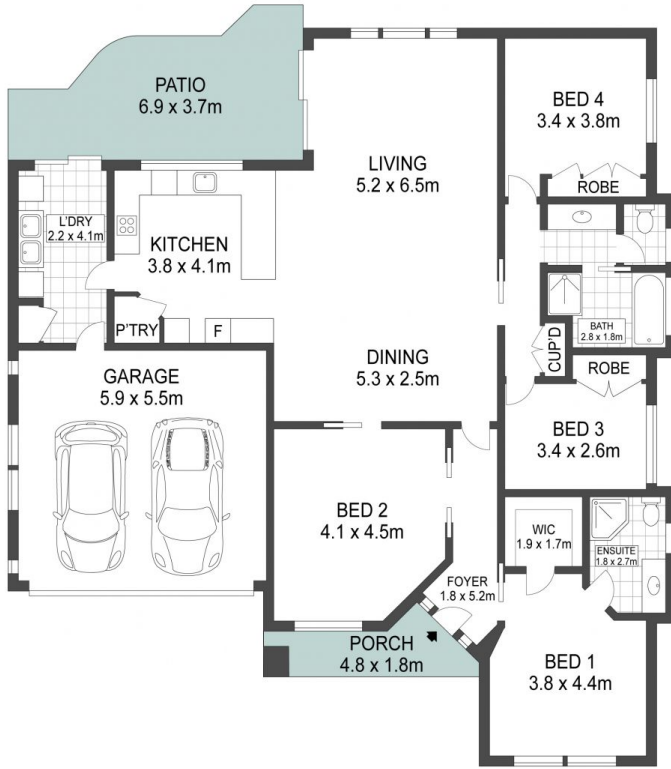


Brian Whiteman
02 4384 1349



Phoebe Chaseling
02 4384 1349

<https://www.whitemanproperty.com.au>



FLOOR PLAN



SITE PLAN

APPROX. INT: 158m²
 APPROX. LAND: 478m²



THE INFORMATION CONTAINED IN THIS DOCUMENT HAS BEEN PROVIDED BY THIRD PARTIES. WHITEMAN PROPERTY HAS NOT CHECKED THE INFORMATION AND MERELY PASSES IT ON, NOT HAVING A BELIEF ONE WAY OR THE OTHER AS TO ITS ACCURACY. INTERESTED PARTIES SHOULD MAKE AND RELY UPON THEIR OWN ENQUIRIES.

36B Bay Road, Blue Bay

