



## 71 Swadling Street Long Jetty NSW

3  3  1 

Set just moments from the coastline, this recently completed home delivers a refined take on coastal living, where clean lines, natural textures and thoughtful design come together with ease. Spanning two levels, the layout has been carefully considered, offering separation, space and flexibility for modern living.

At its heart, open plan living connects seamlessly to multiple covered outdoor areas, while a striking kitchen anchors the space with stone surfaces, quality appliances and a generous island. Upstairs, a second living zone creates a natural breakout, surrounded by well-proportioned bedrooms including a master retreat with walk-in robe and ensuite.

**Type** : Semi Detached  
**Price** : Contact Agent  
**Building Size** : 220 sqm  
**Land Size** : 332 sqm  
**View** : <https://www.whitemanproperty.com.au/sale/nsw/central-coast-region/long-jetty/residential/semi-detached/8685907>

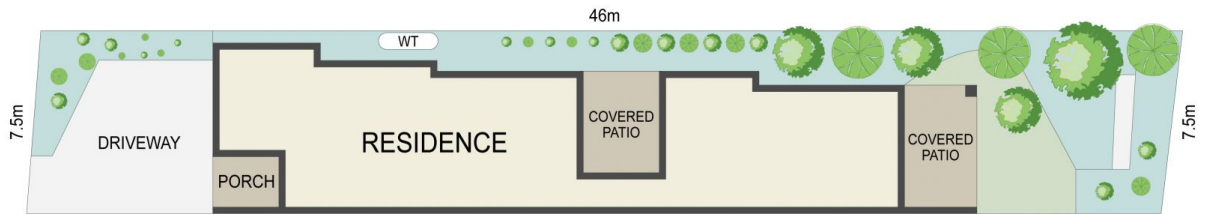
[For full version visit the website](https://www.whitemanproperty.com.au)



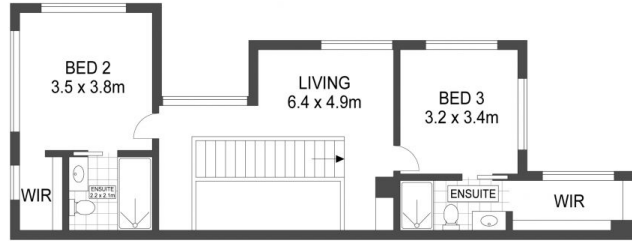
**Brian Whiteman**  
02 4284 1240



**Simon Mitrovich**  
02 4284 1240



46m  
SITE PLAN



FIRST FLOOR



GROUND FLOOR

APPROX. INT: 218m<sup>2</sup>  
APPROX. LAND: 337m<sup>2</sup>



THE INFORMATION CONTAINED IN THIS DOCUMENT HAS BEEN PROVIDED BY THIRD PARTIES. WHITEMAN PROPERTY HAS NOT CHECKED THE INFORMATION AND MERELY PASSES IT ON, NOT HAVING A BELIEF ONE WAY OR THE OTHER AS TO ITS ACCURACY. INTERESTED PARTIES SHOULD MAKE AND RELY UPON THEIR OWN ENQUIRIES.

71A Swadling Street, Long Jetty

