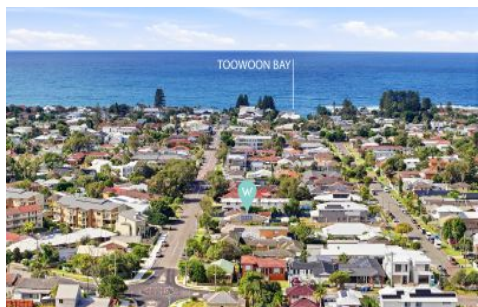


WHITEMAN PROPERTY



49 Toowoong Bay Road Long Jetty NSW

4 2 4

Set within one of Long Jetty's most tightly held pockets, this substantial two-storey home delivers space, flexibility and a lifestyle that plays out as well in winter as it does in summer. With multiple living zones, generous accommodation and a backyard designed for entertaining, it's a home that adapts as life evolves.

Upstairs, the master suite is positioned as a true retreat with walk-in robe, ensuite and direct access to the front balcony - a place to unwind and watch the sunset roll in. Additional bedrooms are well separated, complemented by a second living area and a striking void that draws natural light through the centre of the home, creating a sense of openness across both levels.

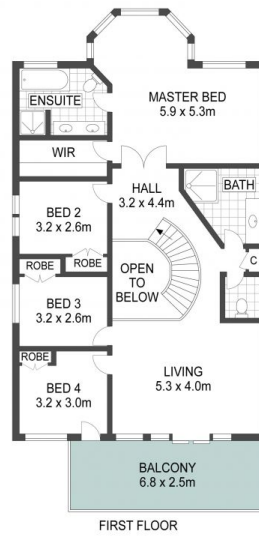
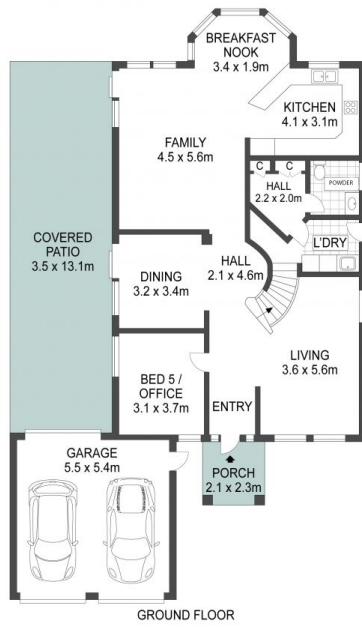
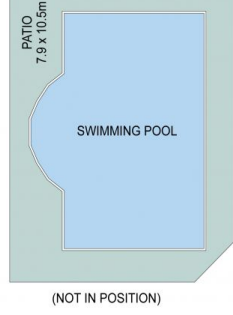
Type : House
Price : Contact Agent
Land Size : 663 sqm
View : <https://www.whitemanproperty.com.au/sale/nsw/central-coast-region/long-jetty/residential/house/8686017>



Dan McLaren
02 4384 1349

[For full version visit the website](https://www.whitemanproperty.com.au)

<https://www.whitemanproperty.com.au>



APPROX. INT: 230m²
APPROX. LAND: 667m²



THE INFORMATION CONTAINED IN THIS DOCUMENT HAS BEEN PROVIDED BY THIRD PARTIES. WHITEMAN PROPERTY HAS NOT CHECKED THE INFORMATION AND MERELY PASSES IT ON, NOT HAVING A BELIEF ONE WAY OR THE OTHER AS TO ITS ACCURACY. INTERESTED PARTIES SHOULD MAKE AND RELY UPON THEIR OWN ENQUIRIES.

49 Toowoon Bay Road, Long Jetty

