

WHITEMAN PROPERTY



83 Eloora Road Long Jetty NSW

4  3  1 

Positioned in a sought-after pocket of Long Jetty, this architecturally designed duplex delivers refined coastal living just moments from the shoreline. Thoughtfully crafted to maximise light, space and privacy, the home offers the scale and comfort of a standalone residence with the ease of modern duplex living.

Set just a short stroll from the sand at Toowoan Bay and surrounded by local cafés, parks and village amenities, it embraces the relaxed rhythm of coastal life. Generous open-plan living zones connect seamlessly to a private outdoor entertaining area and swimming pool, creating a space designed equally for quiet mornings and lively gatherings with family and friends. Warm, contemporary interiors feature coastal tones and

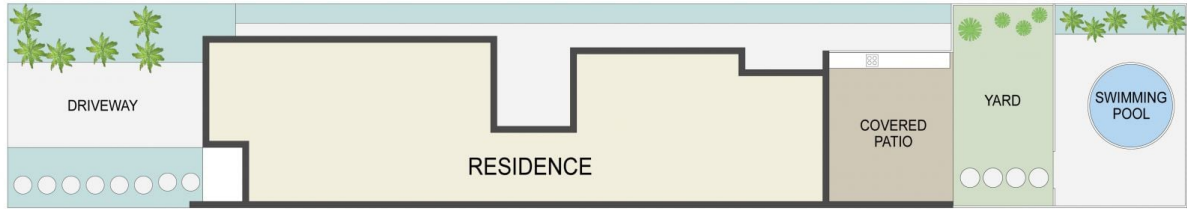
[For full version visit the website](https://www.whitemanproperty.com.au)

Type : House
Price : Contact Agent
View : <https://www.whitemanproperty.com.au/sale/nsw/central-coast-region/long-jetty/residential/house/8687675>

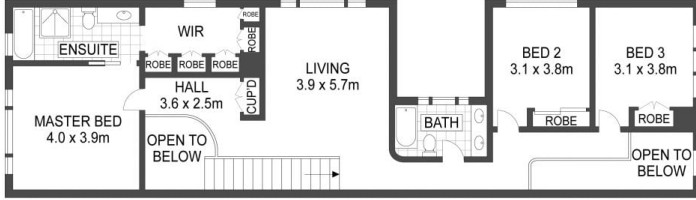


Simon Mitrovich
02 4384 1349

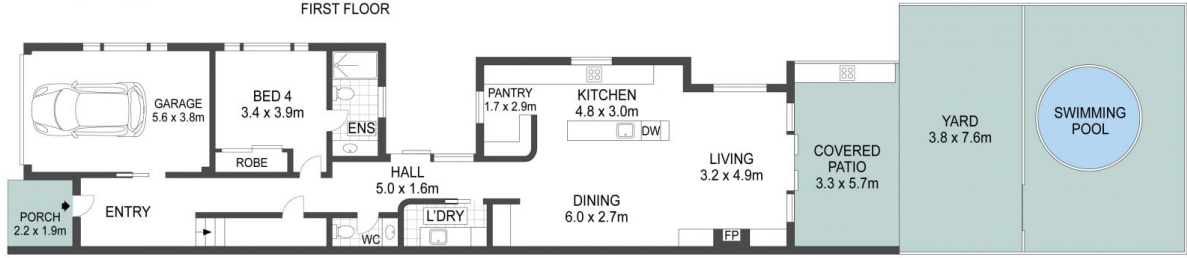
<https://www.whitemanproperty.com.au>



SITE PLAN



FIRST FLOOR



GROUND FLOOR

APPROX. INT: 228m²
 APPROX. LAND: 116m²



THE INFORMATION CONTAINED IN THIS DOCUMENT HAS BEEN PROVIDED BY THIRD PARTIES. WHITEMAN PROPERTY HAS NOT CHECKED THE INFORMATION AND MERELY PASSES IT ON, NOT HAVING A BELIEF ONE WAY OR THE OTHER AS TO ITS ACCURACY. INTERESTED PARTIES SHOULD MAKE AND RELY UPON THEIR OWN ENQUIRIES.

83 Eloora Road, Long Jetty

