

WHITEMAN PROPERTY



13 Bangalow St Ettalong Beach NSW

4  2  2 

Perfectly positioned just moments from the water's edge, Welcome to Seychelles, this homes captures the essence of Ettalong Beach living, relaxed, contemporary, and effortlessly connected to the coast. Set on a level block with convenient rear lane access, it offers both lifestyle and practicality in one of the Peninsula's most sought-after pockets.

Recently renewed, this 3 bedroom house and pool house is ready for you to call home.

Modern kitchen with electric appliances.

Main house offers 3 bedrooms, main with built in robes. The master also offers direct access to side deck.

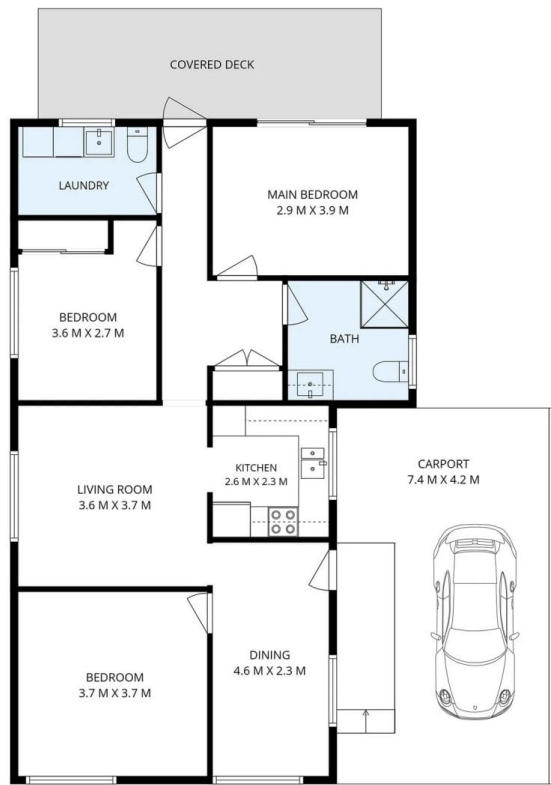
[For full version visit the website](https://www.whitemanproperty.com.au)

Type : House

View : <https://www.whitemanproperty.com.au/lease/nsw/central-coast-region/ettalong-beach/residential/house/8691673>



Laetitia Jones
0439 481 303



INTERNAL AREA : 102m²
 EXTERNAL AREA : 15m²
 GARAGE AREA : 31m²

13 Bangalow Street, Ettalong Beach

The information contained in this document has been provided by third parties. The Agency has not yet checked the information and merely passes it on, not having a belief one way or the other to accuracy. Interested parties should make their own inquiries.

WHITEMAN
 PROPERTY