

# WHITEMAN PROPERTY



## 1/36 Pacific Street Long Jetty NSW

2 1 1

Set at the front of a boutique complex of four, this renovated two-bedroom villa offers bright single level living, a private courtyard and strong investment appeal in a well-connected Long Jetty pocket. Freshly updated throughout, the home is currently leased to a wonderful tenant, making it an attractive option for investors while still holding clear appeal for first home buyers and downsizers.

The layout is simple, practical and easy to enjoy, with open living and dining, two bedrooms with built-in wardrobes, a renovated kitchen, bathroom and laundry, new shutters and new ducted air conditioning with split zoning. From here, everyday convenience meets coastal lifestyle, with Long Jetty cafes, shops, the lakefront, buses, Blue Bay and Toowoan Bay Beach all within easy reach.

[For full version visit the website](https://www.whitemanproperty.com.au/sale/nsw/central-coast-region/long-jetty/residential/house/8711975)

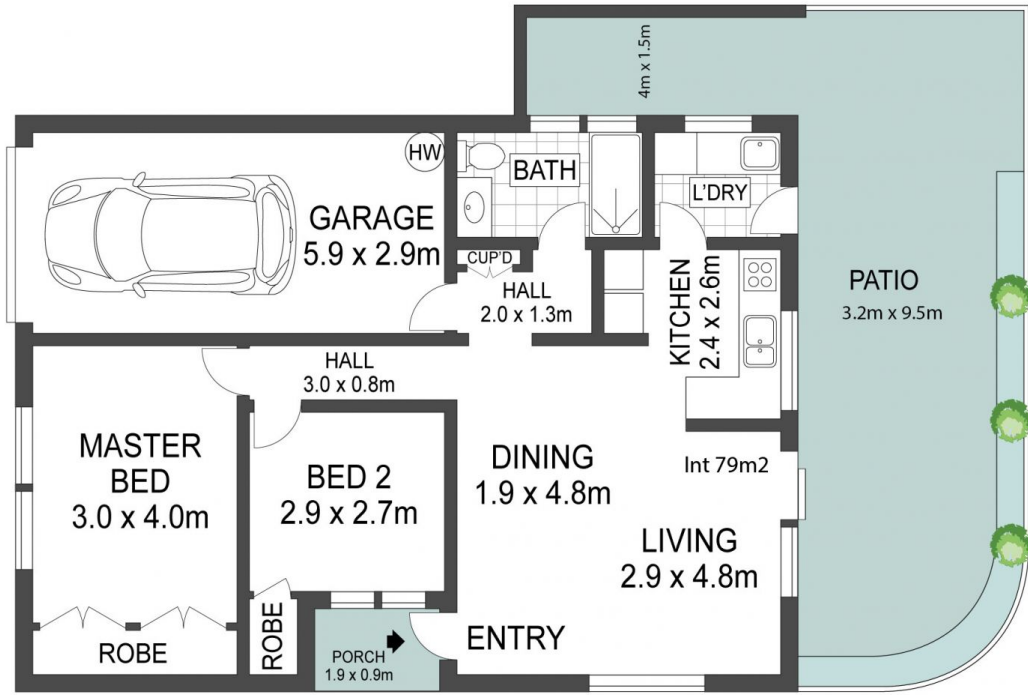
**Type** : House  
**Price** : Guide \$749,000  
**Building Size** : 79 sqm  
**View** : <https://www.whitemanproperty.com.au/sale/nsw/central-coast-region/long-jetty/residential/house/8711975>



**Brian Whiteman**  
02 4384 1349



**Phoebe Chaseling**  
02 4384 1349



Int 79m2  
Total 125m2



THE INFORMATION CONTAINED IN THIS DOCUMENT HAS BEEN PROVIDED BY THIRD PARTIES. WHITEMAN PROPERTY HAS NOT CHECKED THE INFORMATION AND MERELY PASSES IT ON, NOT HAVING A BELIEF ONE WAY OR THE OTHER AS TO ITS ACCURACY. INTERESTED PARTIES SHOULD MAKE AND RELY UPON THEIR OWN ENQUIRIES.

1/36 Pacific Street, Long Jetty

