




# WHITEMAN PROPERTY



## 20 Rhodin Drive Long Jetty NSW

3  2  2 

Brand new and beautifully resolved, this single-level Long Jetty residence has been designed with a calm coastal sensibility and an easy rhythm for everyday living. Soft natural light, high ceilings, skylights and sheer linen curtains create an immediate sense of openness, while the layout gives families, downsizers and entertainers the space to live comfortably without excess upkeep.

The heart of the home is generous, open and effortlessly connected, with living, dining and outdoor entertaining areas working together as one relaxed zone. The kitchen has a refined, sculptural feel, balanced by practical storage, a butler's pantry and quality appliances. With a flexible media room or fourth bedroom, a private master suite and a fully landscaped garden, this is a home that feels fresh,

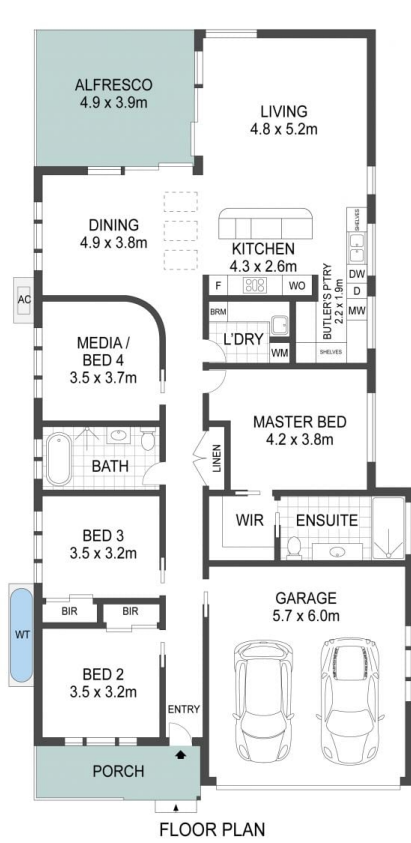
[For full version visit the website](https://www.whitemanproperty.com.au)

**Type** : House  
**Price** : Contact Agent  
**Building Size** : 172 sqm  
**Land Size** : 404 sqm  
**View** : <https://www.whitemanproperty.com.au/sale/nsw/central-coast-region/long-jetty/residential/house/8713478>



**Simon Mitrovich**  
02 4284 1240

<https://www.whitemanproperty.com.au>



APPROX. INT: 195m<sup>2</sup>  
 APPROX. LAND: 409m<sup>2</sup>



THE INFORMATION CONTAINED IN THIS DOCUMENT HAS BEEN PROVIDED BY THIRD PARTIES. WHITEMAN PROPERTY HAS NOT CHECKED THE INFORMATION AND MERELY PASSES IT ON, NOT HAVING A BELIEF ONE WAY OR THE OTHER AS TO ITS ACCURACY. INTERESTED PARTIES SHOULD MAKE AND RELY UPON THEIR OWN ENQUIRIES.

20 Rhodin Drive, Long Jetty

