

WHITEMAN PROPERTY



71A Swadling Street Long Jetty NSW

3  3  1 

Set just moments from the coastline, this recently completed home delivers a refined take on coastal living, where clean lines, natural textures and thoughtful design come together with ease. Spanning two levels, the layout has been carefully considered, offering separation, space and flexibility for modern living.

At its heart, open plan living connects seamlessly to multiple covered outdoor areas, while a striking kitchen anchors the space with stone surfaces, quality appliances and a generous island. Upstairs, a second living zone creates a natural breakout, surrounded by well-proportioned bedrooms including a master retreat with walk-in robe and ensuite.

[For full version visit the website](#)

Type : Semi Detached
Price : Contact Agent
Building Size : 220 sqm
Land Size : 332 sqm
View : <https://www.whitemanproperty.com.au/sale/nsw/central-coast-region/long-jetty/residential/semi-detached/8715557>



Brian Whiteman
02 4284 1240

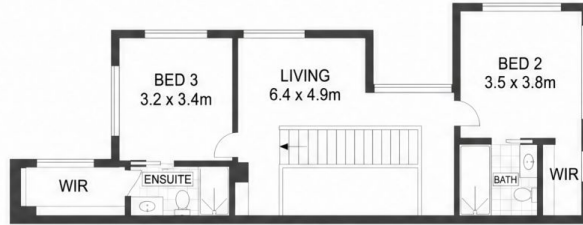


Simon Mitrovich
02 4284 1240

<https://www.whitemanproperty.com.au>



46m
SITE PLAN



FIRST FLOOR



GROUND FLOOR

APPROX. INT: 218m²
APPROX. GARAGE: 23m²
APPROX. LAND: 337m²



THE INFORMATION CONTAINED IN THIS DOCUMENT HAS BEEN PROVIDED BY THIRD PARTIES. WHITEMAN PROPERTY HAS NOT CHECKED THE INFORMATION AND MERELY PASSES IT ON, NOT HAVING A BELIEF ONE WAY OR THE OTHER AS TO ITS ACCURACY. INTERESTED PARTIES SHOULD MAKE AND RELY UPON THEIR OWN ENQUIRIES.

71B Swadling Street, Long Jetty

